

# SPS Series DC Power Supply System



■ High Efficiency

■ High Precision

■ High Stability

# SPS Series DC Power Supply System



13U



27U



19U

Rated Voltage	Output		Model	Size	Certificates
	Rated Current	Rated Power			
32V	600A	12kW	SPS32VDC12000W-2-13	13U ①	CE
	1200A	24kW	SPS32VDC24000W-2-19	19U ②	
	2000A	40kW	SPS32VDC40000W-2-27	27U ③	
40V	360A	12kW	SPS40VDC12000W-2-13	13U ①	
	720A	24kW	SPS40VDC24000W-2-19	19U ②	
	1200A	40kW	SPS40VDC40000W-2-27	27U ③	
75V	180A	12kW	SPS75VDC12000W-2-13	13U ①	
	360A	24kW	SPS75VDC24000W-2-19	19U ②	
	600A	40kW	SPS75VDC40000W-2-27	27U ③	
80V	180A	9kW	SPS80VDC9000W-2-13	13U ①	
	360A	18kW	SPS80VDC18000W-2-19	19U ②	
	600A	30kW	SPS80VDC30000W-2-27	27U ③	
96V	200A	12kW	SPS96VDC12000W-2-13	13U ①	
120V	120A	12kW	SPS120VDC12000W-2-13	13U ①	
	240A	24kW	SPS120VDC24000W-2-19	19U ②	
	400A	40kW	SPS120VDC40000W-2-27	27U ③	
150V	90A	12kW	SPS150VDC12000W-2-13	13U ①	
192V	180A	24kW	SPS150VDC24000W-2-19	19U ②	
	300A	40kW	SPS150VDC40000W-2-27	27U ③	
	200A	24kW	SPS192VDC24000W-2-19	19U ①	
200V	72A	12kW	SPS200VDC12000W-2-13	13U ①	
	144A	24kW	SPS200VDC24000W-2-19	19U ②	
	240A	40kW	SPS200VDC40000W-2-27	27U ③	

Rated Voltage	Output		Model	Size	Certificates
	Rated Current	Rated Power			
225V	60A	12kW	SPS225VDC12000W-2-13	13U ①	CE
240V	60A	9kW	SPS240VDC9000W-2-13	13U ①	
	120A	24kW	SPS240VDC24000W-2-19	19U ②	
320V	200A	40kW	SPS320VDC40000W-2-27	27U ③	
360V	40A	12kW	SPS360VDC12000W-2-13	13U ①	
	120A	40kW	SPS400VDC40000W-2-27	27U ③	
450V	30A	12kW	SPS450VDC12000W-2-13	13U ①	
	60A	24kW	SPS450VDC24000W-2-19	19U ②	
480V	60A	18kW	SPS480VDC18000W-2-19	19U ②	
	30A	12kW	SPS600VDC12000W-2-13	13U ①	
600V	60A	24kW	SPS600VDC24000W-2-19	19U ②	
	100A	40kW	SPS600VDC40000W-2-27	27U ③	
720V	40A	24kW	SPS720VDC24000W-2-19	19U ②	
750V	60A	40kW	SPS750VDC40000W-2-27	27U ③	
800V	22.5A	12kW	SPS800VDC12000W-2-13	13U ①	
	45A	24kW	SPS800VDC24000W-2-19	19U ②	
	60A	30kW	SPS800VDC30000W-2-27	27U ③	
	75A	40kW	SPS800VDC40000W-2-27	27U ③	
900V	30A	24kW	SPS900VDC24000W-2-19	19U ②	
	24A	24kW	SPS1200VDC24000W-2-19	19U ②	
1200V	24A	24kW	SPS1200VDC24000W-2-19	19U ②	
	40A	40kW	SPS1200VDC40000W-2-27	27U ③	

\*This formula is the standard cabinet for SP-2U model; it is available to select cabinet with different specification according to exact situation.

## Dimensions & Weight



① 600.0x576.0x700.0mm & 53.5kg+15kg\*3(REF)



② 600.0x843.0x700.0mm & 100kg+15kg\*6(REF)



③ 600.0x1196.0x700.0mm & 120kg+15kg\*10(REF)

# SPS Series DC Power Supply System

## Features

- With accurate voltage and current measurement capability.
- Coded knobs, multifunctional keyboard.
- Standard RS232/RS485/USB interface, LAN/GPIB is optional.
- Remote sensing to compensate for voltage drop in load leads.
- Support CV and CC automatically switch.
- Function of editing List waveform.
- Use SCPI commands.
- CE certified.
- OVP/OCV/OPP/OTP/SCP.

## Optional Information

GPIB communication card & cables



LAN communication card & cables



Three-core input cable (Input voltage range 176-265V, only supported on 1U height units)



## Front Panel Introduction

1U Power Supply Front Panel



2U Power Supply Front Panel



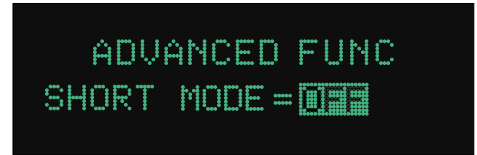
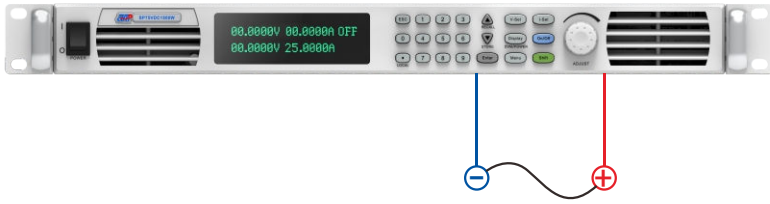
Key	Introduction
	Numeric Key
	Decimal Point
	Escape
	UP, used for choose menu or increase set value in menu operation
	DOWN, used for choose menu or decrease set value in menu operation
	Enter
	Set power supply's output voltage value
	Set power supply's output current-limiting value

Key	Introduction
	Press it to back to the main interface quickly
	Control ON/OFF of power supply
	Menu
	Work with functional keys to realize multifunction
LOCAL	Panel operation
RECALL	Recall stored setting value of power supply from internal storage
STORE	Store current settings of power supply to storage location
DVM/POWER	Display DVM value and power value

# SPS Series DC Power Supply System

## Short Mode

This function is applicable to cable/fuse current carrying capacity test, when activated, the power supply will shutdown the short circuit protection function and maintain ultra-low voltage to output rated current.

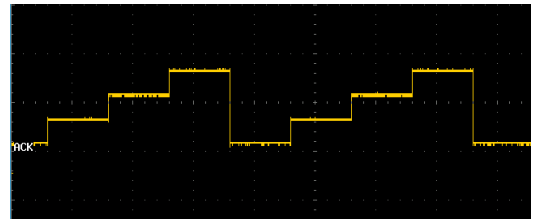
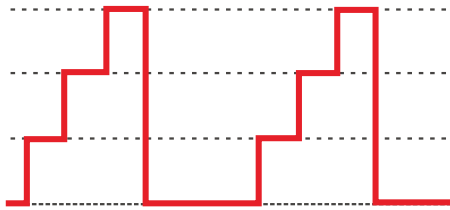


## LIST Waveform Editing Function

This series power supply supports 3 kinds of LIST file editing format in order to meet the output elements of different test requirements. The minimum resolution of time setting is 1ms.

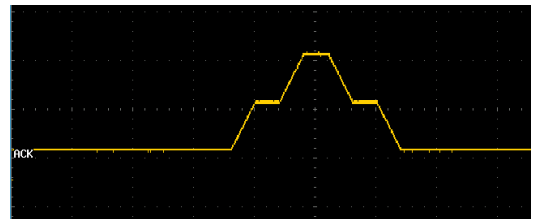
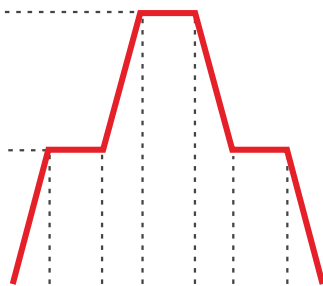
### Impulse File Format

Sets the trend of the output voltage over time and its duration. Set the mode of the output waveform execution as required, LOOP, CONT, STEP.



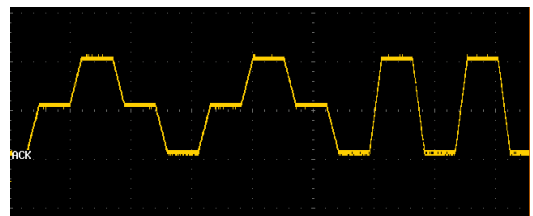
### Slope File Format

Support to set the slope of output voltage, achieve to slowly increase and drop of the output voltage. Set the mode of the output waveform execution as required, LOOP, CONT, STEP.



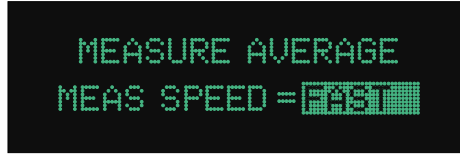
## SEQUENCE Waveform Editing function

This function is an upgrade version of the LIST file editing. Its every step is a complete LIST file. It can combine several LIST file and output, meanwhile, it can set the number of repetitions per LIST file and number of executions of the entire SEQUENCE file.



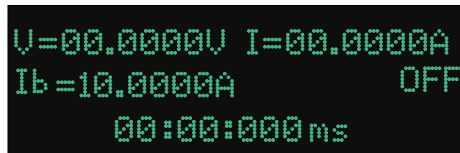
## Measure Average Function

Under this mode, if the DUT has a sharp change in voltage and current, the averaging times can be adjusted to be FAST, MEDIUM or SLOW to make the displayed value more stable.



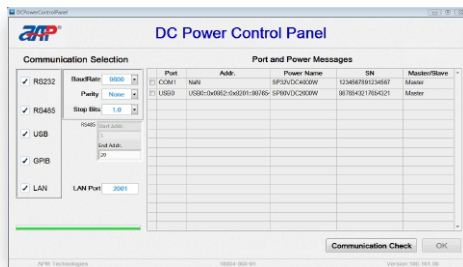
## Current Counting Function

This function offers testing of the cutoff time of a breaker or a fuse. Starts timing when the current reaches the circuit breaker or fuse's fusing current  $I_b$ , stops timing when disconnected, the timing resolution is up to 200ms.

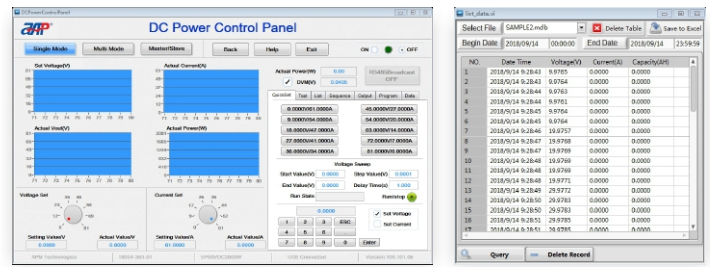


## Monitoring Software

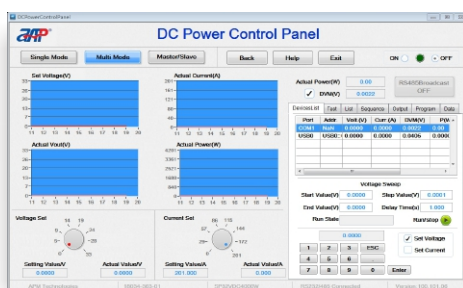
All power supplies come standard with graphical monitoring software, which supports all communication interfaces and covers almost all functions of the power supply front panel operation. In the communication selection interface, users can select the communication interface and search for the connected power supply according to the actual connection.



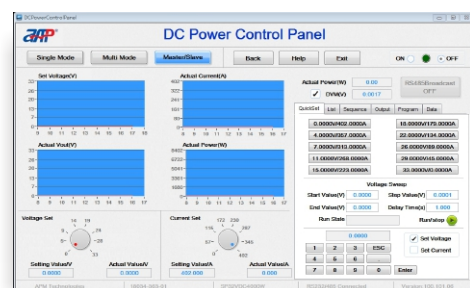
When the communication port has only one power supply connection, it enters the Single Mode interface. Includes the basic settings of voltage and current and measurement function, and List waveform editing/ saved test data function.



When the communication port has more than one power supply connection, it enters the Multi Mode interface. Supports switching control or display current power supply's settings.



When the communication port connects the power supply that is the Master unit, it enters Master/Slave interface. The Master/Slave interface only maintains communication with the Master unit, and the parameters are synchronously written to the slaves.



# SPS Series DC Power Supply System

## SPS32VDC

MODEL	SPS32VDC12000W-2-13		SPS32VDC24000W-2-19	SPS32VDC40000W-2-27
<b>Input</b>				
Voltage	190~265VAC			
Frequency	47~63Hz			
Phase	3 Phase, 4Wire+Groud/Y Connect			
Max.Current	75A	150A	250A	
Input Power Max	15kW	28.5kW	47.5kW	
Power Factor at 220VAC Input, Full Load	0.98 Min. Active PFC			
Efficiency	>88% Max @Full Load and Units=4kW Model			
<b>Output</b>				
Output Voltage	0~32V			
Output Current	0~600A	0~1200A	0~2000A	
Output Power	12kW Max	24kW Max	40kW Max	
Load Regulation	Voltage	90mV	180mV	300mV
	Current	0.6A	1.2A	2A
Line Regulation	Voltage	0.02%F.S.+30mV		
	Current	0.02%F.S.+15mA		
Voltage Setting	Range	0~32V		
	Resolution	0.1mV		
	Accuracy	0.1%+0.1%F.S. at 0< Ouput Voltage =<75Vdc 0.05%+0.05%F.S. at 75Vdc< Ouput Voltage =<1200Vdc		
Current Setting	Range	0~600A	0~1200A	0~2000A
	Resolution	10mA	0.1A	0.1A
	Accuracy	0.1%+0.10%F.S		
Ripple	Voltage	120mVp-p/20mVrms		
	Current	600mA(Full Range) 300mA(TYP Value)	1200mA(Full Range) 600mA(TYP Value)	2000mA(Full Range) 1000mA(TYP Value)
<b>Measurement</b>				
Voltage Setting	Range	0~32V		
	Resolution	0.1mV		
	Accuracy	0.1%+0.1%F.S. at 0< Ouput Voltage =<75Vdc 0.05%+0.05%F.S. at 75Vdc< Ouput Voltage =<1200Vdc		
Current Setting	Range	0~600A	0~1200A	0~2000A
	Resolution	10mA	0.1A	0.1A
	Accuracy	0.1%+0.10%F.S		
<b>Extra Function</b>				
Remote Sense	Range	4V(DC), Max. Total power less than rated power		
Comm. Responce.	50ms			
Graphic Display	VFD			
Operation Key Feature	Soft key, Numeric key, Rotary Knob			
Rack mount Handles	Yes			
FAN	Temperature Control			
Protection Circuits	OCP, OVP, OPP, OTP, FAN			
Interface	USB, RS485, RS232(Standard); LAN, GPIB(Optional)			
<b>Remote Control Input/Output signal characteristics</b>				
Remote Input signal	Not Support			
Remote output signal	Not Support			
<b>Environmental</b>				
Operating Temperature	0°C~40°C			
Storage Temperature	-20°C~70°C			
Altitude	2000m			
Relative Humidity	10%-90%, non-condensing			
Temperature Coefficient	100ppm/°C at Voltage, 300ppm/°C at Current			
<b>Mechanical</b>				
Dimensions(W*H*D)	600.0*576.0*700.0 mm	600.0*843.0*700.0 mm	600.0*1196.0*700.0 mm	
Package Dimensions(W*H*D)	720.0*890.0*820.0 mm	720.0*1160.0*820.0 mm	720.0*1535.0*820.0 mm	
Unit Weight	54kg+15kg*3 (REF)	100.0kg+15kg*6 (REF)	120.0kg+15kg*10 (REF)	
Shipping Weight	94kg+15kg*3 (REF)	160.0kg+15kg*6 (REF)	200.0kg+15kg*10 (REF)	
<b>Regulatory Compliance</b>				
CE Mark	Installation Overvoltage Category II; Class II equipment; indoor use only.			

\*F.S. represents the maximum value of the output range.

\*N stands for the number of installed power supply units, and N is greater than 1.

All specifications are subject to change without notice.

# SPS Series DC Power Supply System

## SPS40VDC

MODEL	SPS40VDC12000W-2-13		SPS40VDC24000W-2-19		SPS40VDC40000W-2-27	
<b>Input</b>						
Voltage	190~265VAC					
Frequency	47~63Hz					
Phase	3 Phase, 4Wire+Groud/Y Connect					
Max.Current	75A	150A		250A		
Input Power Max	15kW	28.5kW		47.5kW		
Power Factor at 220VAC Input, Full Load	0.98 Min. Active PFC					
Efficiency	>88% Max @Full Load and Units=4kW Model					
<b>Output</b>						
Output Voltage	0~40V					
Output Current	0~360A	0~720A		0~1200A		
Output Power	12kW Max	24kW Max		40kW Max		
Load Regulation	Voltage	120mV	240mV		400mV	
	Current	0.36A	0.75A		1.2A	
Line Regulation	Voltage	0.02%F.S.+30mV				
	Current	0.02%F.S.+15mA				
Voltage Setting	Range	0~40V				
	Resolution	0.1mV				
	Accuracy	0.1%+0.1%F.S. at 0< Ouput Voltage =<75Vdc 0.05%+0.05%F.S. at 75Vdc< Ouput Voltage =<1200Vdc				
Current Setting	Range	0~360A	0~720A		0~1200A	
	Resolution	10mA	10mA		0.1A	
	Accuracy	0.1%+0.10%F.S				
Ripple	Voltage	80mVp-p/12mVrms				
	Current	225mA(Full Range)	450mA(Full Range)		750mA(Full Range)	
		30mA(TYP Value)	60mA(TYP Value)		100mA(TYP Value)	
<b>Measurement</b>						
Voltage Setting	Range	0~40V				
	Resolution	0.1mV				
	Accuracy	0.1%+0.1%F.S. at 0< Ouput Voltage =<75Vdc 0.05%+0.05%F.S. at 75Vdc< Ouput Voltage =<1200Vdc				
Current Setting	Range	0~360A	0~720A		0~1200A	
	Resolution	10mA	10mA		0.1A	
	Accuracy	0.1%+0.10%F.S				
<b>Extra Function</b>						
Remote Sense	Range	5V(DC), Max. Total power less than rated power				
Comm. Response.	50ms					
Graphic Display	VFD					
Operation Key Feature	Soft key, Numeric key, Rotary Knob					
Rack mount Handles	Yes					
FAN	Temperature Control					
Protection Circuits	OCP, OVP, OPP, OTP, FAN					
Interface	USB, RS485, RS232(Standard); LAN, GPIB(Optional)					
<b>Remote Control Input/Output signal characteristics</b>						
Remote Input signal	Not Support					
Remote output signal	Not Support					
<b>Environmental</b>						
Operating Temperature	0°C~40°C					
Storage Temperature	-20°C~70°C					
Altitude	2000m					
Relative Humidity	10%-90%, non-condensing					
Temperature Coefficient	100ppm/°C at Voltage, 300ppm/°C at Current					
<b>Mechanical</b>						
Dimensions(W*H*D)	600.0*576.0*700.0 mm		600.0*843.0*700.0 mm		600.0*1196.0*700.0 mm	
Package Dimensions(W*H*D)	720.0*890.0*820.0 mm		720.0*1160.0*820.0 mm		720.0*1535.0*820.0 mm	
Unit Weight	54kg+15kg*3 (REF)		100.0kg+15kg*6 (REF)		120.0kg+15kg*10 (REF)	
Shipping Weight	94kg+15kg*3 (REF)		160.0kg+15kg*6 (REF)		200.0kg+15kg*10 (REF)	
<b>Regulatory Compliance</b>						
CE Mark	Installation Overvoltage Category II; Class II equipment; indoor use only.					

\*F.S. represents the maximum value of the output range.

\*N stands for the number of installed power supply units, and N is greater than 1.

All specifications are subject to change without notice.

# SPS Series DC Power Supply System

## SPS75VDC

MODEL	SPS75VDC12000W-2-13		SPS75VDC24000W-2-19	SPS75VDC40000W-2-27
<b>Input</b>				
Voltage	190~265VAC			
Frequency	47~63Hz			
Phase	3 Phase, 4Wire+Groud/Y Connect			
Max.Current	75A	150A	250A	
Input Power Max	15kW	28.5kW	47.5kW	
Power Factor at 220VAC Input, Full Load	0.98 Min. Active PFC			
Efficiency	>88% Max @Full Load and Units=4kW Model			
<b>Output</b>				
Output Voltage	0~75V			
Output Current	0~180A	0~360A	0~600A	
Output Power	12kW Max	24kW Max	40kW Max	
Load Regulation	Voltage	120mV	240mV	400mV
	Current	0.18A	0.36A	0.6A
Line Regulation	Voltage	0.02%F.S.+30mV		
	Current	0.02%F.S.+15mA		
Voltage Setting	Range	0~75V		
	Resolution	0.1mV		
	Accuracy	0.1%+0.1%F.S. at 0< Ouput Voltage =<75Vdc 0.05%+0.05%F.S. at 75Vdc< Ouput Voltage =<1200Vdc		
Current Setting	Range	0~180A	0~360A	0~600A
	Resolution	10mA		
	Accuracy	0.1%+0.10%F.S		
Ripple	Voltage	80mVp-p/16mVrms		
	Current	90mA(Full Range) 15mA(TYP Value)	180mA(Full Range) 30mA(TYP Value)	300mA(Full Range) 50mA(TYP Value)
<b>Measurement</b>				
Voltage Setting	Range	0~75V		
	Resolution	0.1mV		
	Accuracy	0.1%+0.1%F.S. at 0< Ouput Voltage =<75Vdc 0.05%+0.05%F.S. at 75Vdc< Ouput Voltage =<1200Vdc		
Current Setting	Range	0~180A	0~360A	0~600A
	Resolution	10mA		
	Accuracy	0.1%+0.10%F.S		
<b>Extra Function</b>				
Remote Sense	Range	5V(DC), Max. Total power less than rated power		
Comm. Responce.	50ms			
Graphic Display	VFD			
Operation Key Feature	Soft key, Numeric key, Rotary Knob			
Rack mount Handles	Yes			
FAN	Temperature Control			
Protection Circuits	OCP, OVP, OPP, OTP, FAN			
Interface	USB, RS485, RS232(Standard); LAN, GPIB(Optional)			
<b>Remote Control Input/Output signal characteristics</b>				
Remote Input signal	Not Support			
Remote output signal	Not Support			
<b>Environmental</b>				
Operating Temperature	0°C~40°C			
Storage Temperature	-20°C~70°C			
Altitude	2000m			
Relative Humidity	10%-90%, non-condensing			
Temperature Coefficient	100ppm/°C at Voltage, 300ppm/°C at Current			
<b>Mechanical</b>				
Dimensions(W*H*D)	600.0*576.0*700.0 mm	600.0*843.0*700.0 mm	600.0*1196.0*700.0 mm	
Package Dimensions(W*H*D)	720.0*890.0*820.0 mm	720.0*1160.0*820.0 mm	720.0*1535.0*820.0 mm	
Unit Weight	54kg+15kg*3 (REF)	100.0kg+15kg*6 (REF)	120.0kg+15kg*10 (REF)	
Shipping Weight	94kg+15kg*3 (REF)	160.0kg+15kg*6 (REF)	200.0kg+15kg*10 (REF)	
<b>Regulatory Compliance</b>				
CE Mark	Installation Overvoltage Category II; Class II equipment; indoor use only.			

\*F.S. represents the maximum value of the output range.

\*N stands for the number of installed power supply units, and N is greater than 1.

All specifications are subject to change without notice.

# SPS Series DC Power Supply System

## SPS80VDC

MODEL	SPS80VDC9000W-2-13		SPS80VDC18000W-2-19		SPS80VDC30000W-2-27	
<b>Input</b>						
Voltage	190~265VAC					
Frequency	47~63Hz					
Phase	3 Phase, 4Wire+Groud/Y Connect					
Max.Current	55A		107A		178A	
Input Power Max	10.5kW		20.5kW		34kW	
Power Factor at 220VAC Input, Full Load	0.98 Min. Active PFC					
Efficiency	>88% Max @Full Load and Units=3kW Model					
<b>Output</b>						
Output Voltage	0~80V					
Output Current	0~180A		0~360A		0~600A	
Output Power	9kW Max		18kW Max		30kW Max	
Load Regulation	Voltage	120mV		240mV		400mV
	Current	0.18A		0.36A		0.6A
Line Regulation	Voltage	0.02%F.S.+30mV				
	Current	0.02%F.S.+15mA				
Voltage Setting	Range	0~80V				
	Resolution	0.1mV				
	Accuracy	0.1%+0.1%F.S. at 0< Ouput Voltage =<75Vdc 0.05%+0.05%F.S. at 75Vdc< Ouput Voltage =<1200Vdc				
Current Setting	Range	0~180A		0~360A		0~600A
	Resolution	10mA				
	Accuracy	0.1%+0.10%F.S				
Ripple	Voltage	120mVp-p/18mVrms		240mVp-p/36mVrms		400mVp-p/60mVrms
	Current	75mA(Full Range)		150mA(Full Range)		250mA(Full Range)
		15mA(TYP Value)		30mA(TYP Value)		50mA(TYP Value)
<b>Measurement</b>						
Voltage Setting	Range	0~80V				
	Resolution	0.1mV				
	Accuracy	0.1%+0.1%F.S. at 0< Ouput Voltage =<75Vdc 0.05%+0.05%F.S. at 75Vdc< Ouput Voltage =<1200Vdc				
Current Setting	Range	0~180A		0~360A		0~600A
	Resolution	10mA				
	Accuracy	0.1%+0.10%F.S				
<b>Extra Function</b>						
Remote Sense	Range	5V(DC), Max. Total power less than rated power				
Comm. Responce.	50ms					
Graphic Display	VFD					
Operation Key Feature	Soft key, Numeric key, Rotary Knob					
Rack mount Handles	Yes					
FAN	Temperature Control					
Protection Circuits	OCP, OVP, OPP, OTP, FAN					
Interface	USB, RS485, RS232(Standard); LAN, GPIB(Optional)					
<b>Remote Control Input/Output signal characteristics</b>						
Remote Input signal	Not Support					
Remote output signal	Not Support					
<b>Environmental</b>						
Operating Temperature	0°C~40°C					
Storage Temperature	-20°C~70°C					
Altitude	2000m					
Relative Humidity	10%~90%, non-condensing					
Temperature Coefficient	100ppm/°C at Voltage, 300ppm/°C at Current					
<b>Mechanical</b>						
Dimensions(W*H*D)	600.0*576.0*700.0 mm		600.0*843.0*700.0 mm		600.0*1196.0*700.0 mm	
Package Dimensions(W*H*D)	720.0*890.0*820.0 mm		720.0*1160.0*820.0 mm		720.0*1535.0*820.0 mm	
Unit Weight	54kg+15kg*3 (REF)		100.0kg+15kg*6 (REF)		120.0kg+15kg*10 (REF)	
Shipping Weight	94kg+15kg*3 (REF)		160.0kg+15kg*6 (REF)		200.0kg+15kg*10 (REF)	
<b>Regulatory Compliance</b>						
CE Mark	Installation Overvoltage Category II; Class II equipment; indoor use only.					

\*F.S. represents the maximum value of the output range.

\*N stands for the number of installed power supply units, and N is greater than 1.

All specifications are subject to change without notice.

# SPS Series DC Power Supply System

## SPS96VDC

MODEL		SPS96VDC12000W-2-13
<b>Input</b>		
Voltage	190~265VAC	
Frequency	47~63Hz	
Phase	3 Phase, 4Wire+Groud/Y Connect	
Max.Current	75A	
Input Power Max	15kW	
Power Factor at 220VAC Input, Full Load	0.98 Min. Active PFC	
Efficiency	>88% Max @Full Load and Units=4kW Model	
<b>Output</b>		
Output Voltage	0~96V	
Output Current	0~200A	
Output Power	12kW Max	
Load Regulation	Voltage	90mV
	Current	0.6A
Line Regulation	Voltage	0.02%F.S.+30mV
	Current	0.02%F.S.+15mA
Voltage Setting	Range	0~96V
	Resolution	1mV
	Accuracy	0.1%+0.1%F.S. at 0< Ouput Voltage =<75Vdc 0.05%+0.05%F.S. at 75Vdc< Ouput Voltage =<1200Vdc
Current Setting	Range	0~200A
	Resolution	1mA
	Accuracy	0.1%+0.10%F.S
Ripple	Voltage	90mVp-p/15mVrms
	Current	800mA(Full Range) 400mA(TYP Value)
<b>Measurement</b>		
Voltage Setting	Range	0~96V
	Resolution	1mV
	Accuracy	0.1%+0.1%F.S. at 0< Ouput Voltage =<75Vdc 0.05%+0.05%F.S. at 75Vdc< Ouput Voltage =<1200Vdc
Current Setting	Range	0~200A
	Resolution	1mA
	Accuracy	0.1%+0.10%F.S
<b>Extra Function</b>		
Remote Sense	Range	4V(DC), Max. Total power less than rated power
Comm. Response.	50ms	
Graphic Display	VFD	
Operation Key Feature	Soft key, Numeric key, Rotary Knob	
Rack mount Handles	Yes	
FAN	Temperature Control	
Protection Circuits	OCP, OVP, OPP, OTP, FAN	
Interface	USB, RS485, RS232(Standard); LAN, GPIB(Option)	
<b>Remote Control Input/Output signal characteristics</b>		
Remote Input signal	Not Support	
Remote output signal	Not Support	
<b>Environmental</b>		
Operating Temperature	0°C~40°C	
Storage Temperature	-20°C~70°C	
Altitude	2000m	
Relative Humidity	10%-90%, non-condensing	
Temperature Coefficient	100ppm/°C at Voltage, 300ppm/°C at Current	
<b>Mechanical</b>		
Dimensions(W*H*D)	600.0*576.0*700.0 mm	
Package Dimensions(W*H*D)	720.0*890.0*820.0 mm	
Unit Weight	54kg+15kg*3 (REF)	
Shipping Weight	94kg+15kg*3 (REF)	
<b>Regulatory Compliance</b>		
CE Mark	Installation Overvoltage Category II; Class II equipment; indoor use only.	

\*F.S. represents the maximum value of the output range.

\*N stands for the number of installed power supply units, and N is greater than 1.

All specifications are subject to change without notice.

# SPS Series DC Power Supply System

## SPS120VDC

MODEL	SPS120VDC12000W-2-13		SPS120VDC24000W-2-19	SPS120VDC40000W-2-27
<b>Input</b>				
Voltage	190~265VAC			
Frequency	47~63Hz			
Phase	3 Phase, 4Wire+Groud/Y Connect			
Max.Current	75A	150A	250A	
Input Power Max	15kW	28.5kW	47.5kW	
Power Factor at 220VAC Input, Full Load	0.98 Min. Active PFC			
Efficiency	>88% Max @Full Load and Units=4kW Model			
<b>Output</b>				
Output Voltage	0~120V			
Output Current	0~120A	0~240A	0~400A	
Output Power	12kW Max	24kW Max	40kW Max	
Load Regulation	Voltage	120mV	240mV	400mV
	Current	0.12A	0.24A	0.4A
Line Regulation	Voltage	0.02%F.S.+30mV		
	Current	0.02%F.S.+15mA		
Voltage Setting	Range	0~120V		
	Resolution	1mV		
	Accuracy	0.1%+0.1%F.S. at 0< Ouput Voltage =<75Vdc 0.05%+0.05%F.S. at 75Vdc< Ouput Voltage =<1200Vdc		
Current Setting	Range	0~120A	0~240A	0~400A
	Resolution	10mA		
	Accuracy	0.1%+0.10%F.S		
Ripple	Voltage	160mVp-p/30mVrms		
	Current	90mA(Full Range)	180mA(Full Range)	300mA(Full Range)
		15mA(TYP Value)	30mA(TYP Value)	50mA(TYP Value)
<b>Measurement</b>				
Voltage Setting	Range	0~120V		
	Resolution	0.1mV	1mV	1mV
	Accuracy	0.1%+0.1%F.S. at 0< Ouput Voltage =<75Vdc 0.05%+0.05%F.S. at 75Vdc< Ouput Voltage =<1200Vdc		
Current Setting	Range	0~120A	0~240A	0~400A
	Resolution	10mA		
	Accuracy	0.1%+0.10%F.S		
<b>Extra Function</b>				
Remote Sense	Range	5V(DC), Max. Total power less than rated power		
Comm. Responce.	50ms			
Graphic Display	VFD			
Operation Key Feature	Soft key, Numeric key, Rotary Knob			
Rack mount Handles	Yes			
FAN	Temperature Control			
Protection Circuits	OCP, OVP, OPP, OTP, FAN			
Interface	USB, RS485, RS232(Standard); LAN, GPIB(Option)			
<b>Remote Control Input/Output signal characteristics</b>				
Remote Input signal	Not Support			
Remote output signal	Not Support			
<b>Environmental</b>				
Operating Temperature	0°C~40°C			
Storage Temperature	-20°C~70°C			
Altitude	2000m			
Relative Humidity	10%-90%, non-condensing			
Temperature Coefficient	100ppm/°C at Voltage, 300ppm/°C at Current			
<b>Mechanical</b>				
Dimensions(W*H*D)	600.0*576.0*700.0 mm	600.0*843.0*700.0 mm	600.0*1196.0*700.0 mm	
Package Dimensions(W*H*D)	720.0*890.0*820.0 mm	720.0*1160.0*820.0 mm	720.0*1535.0*820.0 mm	
Unit Weight	54kg+15kg*3 (REF)	100.0kg+15kg*6 (REF)	120.0kg+15kg*10 (REF)	
Shipping Weight	94kg+15kg*3 (REF)	160.0kg+15kg*6 (REF)	200.0kg+15kg*10 (REF)	
<b>Regulatory Compliance</b>				
CE Mark	Installation Overvoltage Category II; Class II equipment; indoor use only.			

\*F.S. represents the maximum value of the output range.

\*N stands for the number of installed power supply units, and N is greater than 1.

All specifications are subject to change without notice.

# SPS Series DC Power Supply System

## SPS150VDC

MODEL	SPS150VDC12000W-2-13		SPS150VDC24000W-2-19	SPS150VDC40000W-2-27
<b>Input</b>				
Voltage	190~265VAC			
Frequency	47~63Hz			
Phase	3 Phase, 4Wire+Groud/Y Connect			
Max.Current	75A	150A	250A	
Input Power Max	15kW	28.5kW	47.5kW	
Power Factor at 220VAC Input, Full Load	0.98 Min. Active PFC			
Efficiency	>88% Max @Full Load and Units=4kW Model			
<b>Output</b>				
Output Voltage	0~150V			
Output Current	0~90A	0~180A	0~300A	
Output Power	12kW Max	24kW Max	40kW Max	
Load Regulation	Voltage	120mV	240mV	400mV
	Current	0.09A	0.18A	0.3A
Line Regulation	Voltage	0.02%F.S.+30mV		
	Current	0.02%F.S.+15mA		
Voltage Setting	Range	0~150V		
	Resolution	1mV		
	Accuracy	0.1%+0.1%F.S. at 0< Ouput Voltage =<75Vdc 0.05%+0.05%F.S. at 75Vdc< Ouput Voltage =<1200Vdc		
Current Setting	Range	0~90A	0~180A	0~300A
	Resolution	1mA	10mA	10mA
	Accuracy	0.1%+0.10%F.S		
Ripple	Voltage	160mVp-p/30mVrms		
	Current	90mA(Full Range) 15mA(TYP Value)	180mA(Full Range) 30mA(TYP Value)	300mA(Full Range) 50mA(TYP Value)
<b>Measurement</b>				
Voltage Setting	Range	0~150V		
	Resolution	1mV		
	Accuracy	0.1%+0.1%F.S. at 0< Ouput Voltage =<75Vdc 0.05%+0.05%F.S. at 75Vdc< Ouput Voltage =<1200Vdc		
Current Setting	Range	0~90A	0~180A	0~300A
	Resolution	1mA	10mA	10mA
	Accuracy	0.1%+0.10%F.S		
<b>Extra Function</b>				
Remote Sense	Range	5V(DC), Max. Total power less than rated power		
Comm. Responce.		50ms		
Graphic Display		VFD		
Operation Key Feature		Soft key, Numeric key, Rotary Knob		
Rack mount Handles		Yes		
FAN		Temperature Control		
Protection Circuits		OCP, OVP, OPP, OTP, FAN		
Interface		USB, RS485, RS232(Standard); LAN, GPIB(Option)		
<b>Remote Control Input/Output signal characteristics</b>				
Remote Input signal		Not Support		
Remote output signal		Not Support		
<b>Environmental</b>				
Operating Temperature		0°C~40°C		
Storage Temperature		-20°C~70°C		
Altitude		2000m		
Relative Humidity		10%-90%, non-condensing		
Temperature Coefficient		100ppm/°C at Voltage, 300ppm/°C at Current		
<b>Mechanical</b>				
Dimensions(W*H*D)	600.0*576.0*700.0 mm	600.0*843.0*700.0 mm	600.0*1196.0*700.0 mm	
Package Dimensions(W*H*D)	720.0*890.0*820.0 mm	720.0*1160.0*820.0 mm	720.0*1535.0*820.0 mm	
Unit Weight	54kg+15kg*3 (REF)	100.0kg+15kg*6 (REF)	120.0kg+15kg*10 (REF)	
Shipping Weight	94kg+15kg*3 (REF)	160.0kg+15kg*6 (REF)	200.0kg+15kg*10 (REF)	
<b>Regulatory Compliance</b>				
CE Mark	Installation Overvoltage Category II; Class II equipment; indoor use only.			

\*F.S. represents the maximum value of the output range.

\*N stands for the number of installed power supply units, and N is greater than 1.

All specifications are subject to change without notice.

# SPS Series DC Power Supply System

## SPS192VDC

MODEL		SPS192VDC24000W-2-19
<b>Input</b>		
Voltage	190~265VAC	
Frequency	47~63Hz	
Phase	3 Phase, 4Wire+Groud/Y Connect	
Max.Current	150A	
Input Power Max	28.5kW	
Power Factor at 220VAC Input, Full Load	0.98 Min. Active PFC	
Efficiency	>88% Max @Full Load and Units=4kW Model	
<b>Output</b>		
Output Voltage	0~192V	
Output Current	0~200A	
Output Power	24kW Max	
Load Regulation	Voltage	180mV
	Current	1.2A
Line Regulation	Voltage	0.02%F.S.+30mV
	Current	0.02%F.S.+15mA
Voltage Setting	Range	0~192V
	Resolution	10mV
	Accuracy	0.1%+0.1%F.S. at 0< Ouput Voltage =<75Vdc 0.05%+0.05%F.S. at 75Vdc< Ouput Voltage =<1200Vdc
Current Setting	Range	0~200A
	Resolution	1mA
	Accuracy	0.1%+0.10%F.S
Ripple	Voltage	180mVp-p/30mVrms
	Current	800mA(Full Range) 400mA(TYP Value)
<b>Measurement</b>		
Voltage Setting	Range	0~192V
	Resolution	10mV
	Accuracy	0.1%+0.1%F.S. at 0< Ouput Voltage =<75Vdc 0.05%+0.05%F.S. at 75Vdc< Ouput Voltage =<1200Vdc
Current Setting	Range	0~200A
	Resolution	1mA
	Accuracy	0.1%+0.10%F.S
<b>Extra Function</b>		
Remote Sense	Range	4V(DC), Max. Total power less than rated power
Comm. Response.	50ms	
Graphic Display	VFD	
Operation Key Feature	Soft key, Numeric key, Rotary Knob	
Rack mount Handles	Yes	
FAN	Temperature Control	
Protection Circuits	OCP, OVP, OPP, OTP, FAN	
Interface	USB, RS485, RS232(Standard); LAN, GPIB(Option)	
<b>Remote Control Input/Output signal characteristics</b>		
Remote Input signal	Not Support	
Remote output signal	Not Support	
<b>Environmental</b>		
Operating Temperature	0°C~40°C	
Storage Temperature	-20°C~70°C	
Altitude	2000m	
Relative Humidity	10%-90%, non-condensing	
Temperature Coefficient	100ppm/°C at Voltage, 300ppm/°C at Current	
<b>Mechanical</b>		
Dimensions(W*H*D)	600.0*843.0*700.0 mm	
Package Dimensions(W*H*D)	720.0*1160.0*820.0 mm	
Unit Weight	100.0kg+15kg*6 (REF)	
Shipping Weight	160.0kg+15kg*6 (REF)	
<b>Regulatory Compliance</b>		
CE Mark	Installation Overvoltage Category II; Class II equipment; indoor use only.	

\*F.S. represents the maximum value of the output range.

\*N stands for the number of installed power supply units, and N is greater than 1.

All specifications are subject to change without notice.

# SPS Series DC Power Supply System

## SPS200VDC

MODEL	SPS200VDC12000W-2-13		SPS200VDC24000W-2-19	SPS200VDC40000W-2-27
<b>Input</b>				
Voltage	190~265VAC			
Frequency	47~63Hz			
Phase	3 Phase, 4Wire+Groud/Y Connect			
Max.Current	75A	150A	250A	
Input Power Max	15kW	28.5kW	47.5kW	
Power Factor at 220VAC Input, Full Load	0.98 Min. Active PFC			
Efficiency	>88% Max @Full Load and Units=4kW Model			
<b>Output</b>				
Output Voltage	0~200V			
Output Current	0~72A	0~144A	0~240A	
Output Power	12kW Max	24kW Max	40kW Max	
Load Regulation	Voltage	180mV	360mV	600mV
	Current	72mA	144mA	240mA
Line Regulation	Voltage	0.02%F.S.+30mV		
	Current	0.02%F.S.+15mA		
Voltage Setting	Range	0~200V		
	Resolution	1mV		
	Accuracy	0.1%+0.1%F.S. at 0< Ouput Voltage =<75Vdc 0.05%+0.05%F.S. at 75Vdc< Ouput Voltage =<1200Vdc		
Current Setting	Range	0~72A	0~144A	0~240A
	Resolution	1mA	10mA	10mA
	Accuracy	0.1%+0.10%F.S		
Ripple	Voltage	300mVp-p/60mVrms		
	Current	75mA(Full Range)	150mA(Full Range)	250mA(Full Range)
		30mA(TYP Value)	60mA(TYP Value)	100mA(TYP Value)
<b>Measurement</b>				
Voltage Setting	Range	0~200V		
	Resolution	1mV		
	Accuracy	0.1%+0.1%F.S. at 0< Ouput Voltage =<75Vdc 0.05%+0.05%F.S. at 75Vdc< Ouput Voltage =<1200Vdc		
Current Setting	Range	0~72A	0~144A	0~240A
	Resolution	1mA	10mA	10mA
	Accuracy	0.1%+0.10%F.S		
<b>Extra Function</b>				
Remote Sense	Range	5V(DC), Max. Total power less than rated power		
Comm. Responce.	50ms			
Graphic Display	VFD			
Operation Key Feature	Soft key, Numeric key, Rotary Knob			
Rack mount Handles	Yes			
FAN	Temperature Control			
Protection Circuits	OCP, OVP, OPP, OTP, FAN			
Interface	USB, RS485, RS232(Standard); LAN, GPIB(Option)			
<b>Remote Control Input/Output signal characteristics</b>				
Remote Input signal	Not Support			
Remote output signal	Not Support			
<b>Environmental</b>				
Operating Temperature	0°C~40°C			
Storage Temperature	-20°C~70°C			
Altitude	2000m			
Relative Humidity	10%-90%, non-condensing			
Temperature Coefficient	100ppm/°C at Voltage, 300ppm/°C at Current			
<b>Mechanical</b>				
Dimensions(W*H*D)	600.0*576.0*700.0 mm	600.0*843.0*700.0 mm	600.0*1196.0*700.0 mm	
Package Dimensions(W*H*D)	720.0*890.0*820.0 mm	720.0*1160.0*820.0 mm	720.0*1535.0*820.0 mm	
Unit Weight	54kg+15kg*3 (REF)	100.0kg+15kg*6 (REF)	120.0kg+15kg*10 (REF)	
Shipping Weight	94kg+15kg*3 (REF)	160.0kg+15kg*6 (REF)	200.0kg+15kg*10 (REF)	
<b>Regulatory Compliance</b>				
CE Mark	Installation Overvoltage Category II; Class II equipment; indoor use only.			

\*F.S. represents the maximum value of the output range.

\*N stands for the number of installed power supply units, and N is greater than 1.

All specifications are subject to change without notice.

# SPS Series DC Power Supply System

## SPS225VDC

MODEL		SPS225VDC12000W-2-13	
<b>Input</b>			
Voltage	190~265VAC		
Frequency	47~63Hz		
Phase	3 Phase, 4Wire+Groud/Y Connect		
Max.Current	75A		
Input Power Max	15kW		
Power Factor at 220VAC Input, Full Load	0.98 Min. Active PFC		
Efficiency	>88% Max @Full Load and Units=4kW Model		
<b>Output</b>			
Output Voltage	0~225V		
Output Current	0~60A		
Output Power	12kW Max		
Load Regulation	Voltage	120mV	
	Current	0.18A	
Line Regulation	Voltage	0.02%F.S.+30mV	
	Current	0.02%F.S.+15mA	
Voltage Setting	Range	0~225V	
	Resolution	10mV	
	Accuracy	0.1%+0.1%F.S. at 0< Ouput Voltage =<75Vdc 0.05%+0.05%F.S. at 75Vdc< Ouput Voltage =<1200Vdc	
Current Setting	Range	0~60A	
	Resolution	0.1mA	
	Accuracy	0.1%+0.10%F.S	
Ripple	Voltage	60mVp-p/12mVrms	
	Current	120mA(Full Range) 20mA(TYP Value)	
<b>Measurement</b>			
Voltage Setting	Range	0~225V	
	Resolution	10mV	
	Accuracy	0.1%+0.1%F.S. at 0< Ouput Voltage =<75Vdc 0.05%+0.05%F.S. at 75Vdc< Ouput Voltage =<1200Vdc	
Current Setting	Range	0~60A	
	Resolution	0.1mA	
	Accuracy	0.1%+0.10%F.S	
<b>Extra Function</b>			
Remote Sense	Range	5V(DC), Max. Total power less than rated power	
Comm. Response.	50ms		
Graphic Display	VFD		
Operation Key Feature	Soft key, Numeric key, Rotary Knob		
Rack mount Handles	Yes		
FAN	Temperature Control		
Protection Circuits	OCP, OVP, OPP, OTP, FAN		
Interface	USB, RS485, RS232(Standard); LAN, GPIB(Option)		
<b>Remote Control Input/Output signal characteristics</b>			
Remote Input signal	Not Support		
Remote output signal	Not Support		
<b>Environmental</b>			
Operating Temperature	0°C~40°C		
Storage Temperature	-20°C~70°C		
Altitude	2000m		
Relative Humidity	10%-90%, non-condensing		
Temperature Coefficient	100ppm/°C at Voltage, 300ppm/°C at Current		
<b>Mechanical</b>			
Dimensions(W*H*D)	600.0*576.0*700.0 mm		
Package Dimensions(W*H*D)	720.0*890.0*820.0 mm		
Unit Weight	54kg+15kg*3 (REF)		
Shipping Weight	94kg+15kg*3 (REF)		
<b>Regulatory Compliance</b>			
CE Mark	Installation Overvoltage Category II; Class II equipment; indoor use only.		

\*F.S. represents the maximum value of the output range.

\*N stands for the number of installed power supply units, and N is greater than 1.

All specifications are subject to change without notice.

# SPS Series DC Power Supply System

## SPS240VDC

MODEL		SPS240VDC9000W-2-13	SPS240VDC24000W-2-19
<b>Input</b>			
Voltage		190~265VAC	
Frequency		47~63Hz	
Phase		3 Phase,4Wire+Groud/Y Connect	
Max.Current		55A	150A
Input Power Max		10.5kW	28.5kW
Power Factor at 220VAC Input, Full Load		0.98 Min. Active PFC	
Efficiency		>88% Max @Full Load and Units=3kW Model	>88% Max @Full Load and Units=4kW Model
<b>Output</b>			
Output Voltage		0~240V	
Output Current		0~60A	0~120A
Output Power		9kW Max	24kW Max
Load Regulation	Voltage	120mV	240mV
	Current	0.18A	0.75A
Line Regulation	Voltage	0.02%F.S.+30mV	
	Current	0.02%F.S.+15mA	
Voltage Setting	Range	0~240V	
	Resolution	10mV	
	Accuracy	0.1%+0.1%F.S. at 0< Ouput Voltage =<75Vdc 0.05%+0.05%F.S. at 75Vdc< Ouput Voltage =<1200Vdc	
Current Setting	Range	0~60A	0~120A
	Resolution	2mA	1mA
	Accuracy	0.1%+0.10%F.S	
Ripple	Voltage	60mVp-p/9mVrms	120mVp-p/18mVrms
	Current	150mA(Full Range)	300mA(Full Range)
		30mA(TYP Value)	0mA(TYP Value)
<b>Measurement</b>			
Voltage Setting	Range	0~240V	
	Resolution	10mV	
	Accuracy	0.1%+0.1%F.S. at 0< Ouput Voltage =<75Vdc 0.05%+0.05%F.S. at 75Vdc< Ouput Voltage =<1200Vdc	
Current Setting	Range	0~60A	0~120A
	Resolution	2mA	1mA
	Accuracy	0.1%+0.10%F.S	
<b>Extra Function</b>			
Remote Sense	Range	5V(DC), Max. Total power less than rated power	
Comm. Response.		50ms	
Graphic Display		VFD	
Operation Key Feature		Soft key, Numeric key, Rotary Knob	
Rack mount Handles		Yes	
FAN		Temperature Control	
Protection Circuits		OCP, OVP, OPP, OTP, FAN	
Interface		USB, RS485, RS232(Standard); LAN, GPIB(Option)	
<b>Remote Control Input/Output signal characteristics</b>			
Remote Input signal		Not Support	
Remote output signal		Not Support	
<b>Environmental</b>			
Operating Temperature		0°C~40°C	
Storage Temperature		-20°C~70°C	
Altitude		2000m	
Relative Humidity		10%-90%, non-condensing	
Temperature Coefficient		100ppm/°C at Voltage, 300ppm/°C at Current	
<b>Mechanical</b>			
Dimensions(W*H*D)		600.0*576.0*700.0 mm	600.0*843.0*700.0 mm
Package Dimensions(W*H*D)		720.0*890.0*820.0 mm	720.0*1160.0*820.0 mm
Unit Weight		54kg+15kg*3 (REF)	100.0kg+15kg*6 (REF)
Shipping Weight		94kg+15kg*3 (REF)	160.0kg+15kg*6 (REF)
<b>Regulatory Compliance</b>			
CE Mark		Installation Overvoltage Category II; Class II equipment; indoor use only.	

\*F.S. represents the maximum value of the output range.

\*N stands for the number of installed power supply units, and N is greater than 1.

All specifications are subject to change without notice.

# SPS Series DC Power Supply System

## SPS320VDC

MODEL		SPS320VDC4000W-2-27	
<b>Input</b>			
Voltage	190~265VAC		
Frequency	47~63Hz		
Phase	3 Phase, 4Wire+Groud/Y Connect		
Max.Current	250A		
Input Power Max	47.5kW		
Power Factor at 220VAC Input, Full Load	0.98 Min. Active PFC		
Efficiency	>88% Max @Full Load and Units=4kW Model		
<b>Output</b>			
Output Voltage	0~320V		
Output Current	0~200A		
Output Power	40kW Max		
Load Regulation	Voltage	300mV	
	Current	2A	
Line Regulation	Voltage	0.02%F.S.+30mV	
	Current	0.02%F.S.+15mA	
Voltage Setting	Range	0~320V	
	Resolution	10mV	
	Accuracy	0.1%+0.1%F.S. at 0< Ouput Voltage =<75Vdc 0.05%+0.05%F.S. at 75Vdc< Ouput Voltage =<1200Vdc	
Current Setting	Range	0~200A	
	Resolution	1mA	
	Accuracy	0.1%+0.10%F.S	
Ripple	Voltage	300mVp-p/50mVrms	
	Current	800mA(Full Range) 400mA(TYP Value)	
<b>Measurement</b>			
Voltage Setting	Range	0~320V	
	Resolution	10mV	
	Accuracy	0.1%+0.1%F.S. at 0< Ouput Voltage =<75Vdc 0.05%+0.05%F.S. at 75Vdc< Ouput Voltage =<1200Vdc	
Current Setting	Range	0~200A	
	Resolution	1mA	
	Accuracy	0.1%+0.10%F.S	
<b>Extra Function</b>			
Remote Sense	Range	4V(DC), Max. Total power less than rated power	
Comm. Response.	50ms		
Graphic Display	VFD		
Operation Key Feature	Soft key, Numeric key, Rotary Knob		
Rack mount Handles	Yes		
FAN	Temperature Control		
Protection Circuits	OCP, OVP, OPP, OTP, FAN		
Interface	USB, RS485, RS232(Standard); LAN, GPIB(Option)		
<b>Remote Control Input/Output signal characteristics</b>			
Remote Input signal	Not Support		
Remote output signal	Not Support		
<b>Environmental</b>			
Operating Temperature	0°C~40°C		
Storage Temperature	-20°C~70°C		
Altitude	2000m		
Relative Humidity	10%-90%, non-condensing		
Temperature Coefficient	100ppm/°C at Voltage, 300ppm/°C at Current		
<b>Mechanical</b>			
Dimensions(W*H*D)	600.0*1196.0*700.0 mm		
Package Dimensions(W*H*D)	720.0*1535.0*820.0 mm		
Unit Weight	120.0kg+15kg*10 (REF)		
Shipping Weight	200.0kg+15kg*10 (REF)		
<b>Regulatory Compliance</b>			
CE Mark	Installation Overvoltage Category II; Class II equipment; indoor use only.		

\*F.S. represents the maximum value of the output range.

\*N stands for the number of installed power supply units, and N is greater than 1.

All specifications are subject to change without notice.

# SPS Series DC Power Supply System

## SPS360VDC

MODEL		SPS360VDC12000W-2-13	
<b>Input</b>			
Voltage	190~265VAC		
Frequency	47~63Hz		
Phase	3 Phase, 4Wire+Groud/Y Connect		
Max.Current	75A		
Input Power Max	15kW		
Power Factor at 220VAC Input, Full Load	0.98 Min. Active PFC		
Efficiency	>88% Max @Full Load and Units=4kW Model		
<b>Output</b>			
Output Voltage	0~360V		
Output Current	0~40A		
Output Power	12kW Max		
Load Regulation	Voltage	120mV	
	Current	0.12A	
Line Regulation	Voltage	0.02%F.S.+30mV	
	Current	0.02%F.S.+15mA	
Voltage Setting	Range	0~360V	
	Resolution	10mV	
	Accuracy	0.1%+0.1%F.S. at 0< Ouput Voltage =<75Vdc 0.05%+0.05%F.S. at 75Vdc< Ouput Voltage =<1200Vdc	
Current Setting	Range	0~40A	
	Resolution	0.1mA	
	Accuracy	0.1%+0.10%F.S	
Ripple	Voltage	120mVp-p/22.5mVrms	
	Current	120mA(Full Range)	
		20mA(TYP Value)	
<b>Measurement</b>			
Voltage Setting	Range	0~360V	
	Resolution	10mV	
	Accuracy	0.1%+0.1%F.S. at 0< Ouput Voltage =<75Vdc 0.05%+0.05%F.S. at 75Vdc< Ouput Voltage =<1200Vdc	
Current Setting	Range	0~40A	
	Resolution	0.1mA	
	Accuracy	0.1%+0.10%F.S	
<b>Extra Function</b>			
Remote Sense	Range	5V(DC), Max. Total power less than rated power	
Comm. Response.	50ms		
Graphic Display	VFD		
Operation Key Feature	Soft key, Numeric key, Rotary Knob		
Rack mount Handles	Yes		
FAN	Temperature Control		
Protection Circuits	OCP, OVP, OPP, OTP, FAN		
Interface	USB, RS485, RS232(Standard); LAN, GPIB(Optional)		
<b>Remote Control Input/Output signal characteristics</b>			
Remote Input signal	Not Support		
Remote output signal	Not Support		
<b>Environmental</b>			
Operating Temperature	0°C~40°C		
Storage Temperature	-20°C~70°C		
Altitude	2000m		
Relative Humidity	10%-90%, non-condensing		
Temperature Coefficient	100ppm/°C at Voltage, 300ppm/°C at Current		
<b>Mechanical</b>			
Dimensions(W*H*D)	600.0*576.0*700.0 mm		
Package Dimensions(W*H*D)	720.0*890.0*820.0 mm		
Unit Weight	4kg+15kg*3 (REF)		
Shipping Weight	94kg+15kg*3 (REF)		
<b>Regulatory Compliance</b>			
CE Mark	Installation Overvoltage Category II; Class II equipment; indoor use only.		

\*F.S. represents the maximum value of the output range.

\*N stands for the number of installed power supply units, and N is greater than 1.

All specifications are subject to change without notice.

# SPS Series DC Power Supply System

## SPS400VDC

MODEL		SPS400VDC40000W-2-27	
<b>Input</b>			
Voltage	190~265VAC		
Frequency	47~63Hz		
Phase	3 Phase, 4Wire+Groud/Y Connect		
Max.Current	250A		
Input Power Max	47.5kW		
Power Factor at 220VAC Input, Full Load	0.98 Min. Active PFC		
Efficiency	>88% Max @Full Load and Units=4kW Model		
<b>Output</b>			
Output Voltage	0~400V		
Output Current	0~120A		
Output Power	40kW Max		
Load Regulation	Voltage	400mV	
	Current	1.2A	
Line Regulation	Voltage	0.02%F.S.+30mV	
	Current	0.02%F.S.+15mA	
Voltage Setting	Range	0~400V	
	Resolution	10mV	
	Accuracy	0.1%+0.1%F.S. at 0< Ouput Voltage =<75Vdc 0.05%+0.05%F.S. at 75Vdc< Ouput Voltage =<1200Vdc	
Current Setting	Range	0~120A	
	Resolution	1mA	
	Accuracy	0.1%+0.10%F.S	
Ripple	Voltage	200mVp-p/30mVrms	
	Current	300mA(Full Range) 40mA(TYP Value)	
<b>Measurement</b>			
Voltage Setting	Range	0~400V	
	Resolution	10mV	
	Accuracy	0.1%+0.1%F.S. at 0< Ouput Voltage =<75Vdc 0.05%+0.05%F.S. at 75Vdc< Ouput Voltage =<1200Vdc	
Current Setting	Range	0~120A	
	Resolution	1mA	
	Accuracy	0.1%+0.10%F.S	
<b>Extra Function</b>			
Remote Sense	Range	5V(DC), Max. Total power less than rated power	
Comm. Response.	50ms		
Graphic Display	VFD		
Operation Key Feature	Soft key, Numeric key, Rotary Knob		
Rack mount Handles	Yes		
FAN	Temperature Control		
Protection Circuits	OCP, OVP, OPP, OTP, FAN		
Interface	USB, RS485, RS232(Standard); LAN, GPIB(Option)		
<b>Remote Control Input/Output signal characteristics</b>			
Remote Input signal	Not Support		
Remote output signal	Not Support		
<b>Environmental</b>			
Operating Temperature	0°C~40°C		
Storage Temperature	-20°C~70°C		
Altitude	2000m		
Relative Humidity	10%-90%, non-condensing		
Temperature Coefficient	100ppm/°C at Voltage, 300ppm/°C at Current		
<b>Mechanical</b>			
Dimensions(W*H*D)	600.0*1196.0*700.0 mm		
Package Dimensions(W*H*D)	720.0*1535.0*820.0 mm		
Unit Weight	120.0kg+15kg*10 (REF)		
Shipping Weight	200.0kg+15kg*10 (REF)		
<b>Regulatory Compliance</b>			
CE Mark	Installation Overvoltage Category II; Class II equipment; indoor use only.		

\*F.S. represents the maximum value of the output range.

\*N stands for the number of installed power supply units, and N is greater than 1.

All specifications are subject to change without notice.

# SPS Series DC Power Supply System

## SPS450VDC

MODEL		SPS450VDC12000W-2-13	SPS450VDC24000W-2-19
<b>Input</b>			
Voltage	190~265VAC		
Frequency	47~63Hz		
Phase	3 Phase, 4Wire+Groud/Y Connect		
Max.Current	75A	150A	
Input Power Max	15kW	28.5kW	
Power Factor at 220VAC Input, Full Load	0.98 Min. Active PFC		
Efficiency	>88% Max @Full Load and Units=4kW Model		
<b>Output</b>			
Output Voltage	0~450V		
Output Current	0~30A	0~60A	
Output Power	12kW Max	24kW Max	
Load Regulation	Voltage	120mV	240mV
	Current	0.09A	0.36A
Line Regulation	Voltage	0.02%F.S.+30mV	
	Current	0.02%F.S.+15mA	
Voltage Setting	Range	0~450V	
	Resolution	10mV	
	Accuracy	0.1%+0.1%F.S. at 0< Ouput Voltage =<75Vdc 0.05%+0.05%F.S. at 75Vdc< Ouput Voltage =<1200Vdc	
Current Setting	Range	0~30A	0~60A
	Resolution	0.1mA	
	Accuracy	0.1%+0.10%F.S	
Ripple	Voltage	120mVp-p/22.5mVrms	120mVp-p/24mVrms
	Current	120mA(Full Range) 20mA(TYP Value)	
<b>Measurement</b>			
Voltage Setting	Range	0~450V	
	Resolution	10mV	
	Accuracy	0.1%+0.1%F.S. at 0< Ouput Voltage =<75Vdc 0.05%+0.05%F.S. at 75Vdc< Ouput Voltage =<1200Vdc	
Current Setting	Range	0~30A	0~60A
	Resolution	0.1mA	
	Accuracy	0.1%+0.10%F.S	
<b>Extra Function</b>			
Remote Sense	Range	5V(DC), Max. Total power less than rated power	
Comm. Response.	50ms		
Graphic Display	VFD		
Operation Key Feature	Soft key, Numeric key, Rotary Knob		
Rack mount Handles	Yes		
FAN	Temperature Control		
Protection Circuits	OCP, OVP, OPP, OTP, FAN		
Interface	USB, RS485, RS232(Standard); LAN, GPIB(Optional)		
<b>Remote Control Input/Output signal characteristics</b>			
Remote Input signal	Not Support		
Remote output signal	Not Support		
<b>Environmental</b>			
Operating Temperature	0°C~40°C		
Storage Temperature	-20°C~70°C		
Altitude	2000m		
Relative Humidity	10%~90%, non-condensing		
Temperature Coefficient	100ppm/°C at Voltage, 300ppm/°C at Current		
<b>Mechanical</b>			
Dimensions(W*H*D)	600.0*576.0*700.0 mm	600.0*843.0*700.0 mm	
Package Dimensions(W*H*D)	720.0*890.0*820.0 mm	720.0*1160.0*820.0 mm	
Unit Weight	54kg+15kg*3 (REF)	100.0kg+15kg*6 (REF)	
Shipping Weight	94kg+15kg*3 (REF)	160.0kg+15kg*6 (REF)	
<b>Regulatory Compliance</b>			
CE Mark	Installation Overvoltage Category II; Class II equipment; indoor use only.		

\*F.S. represents the maximum value of the output range.

\*N stands for the number of installed power supply units, and N is greater than 1.

All specifications are subject to change without notice.

# SPS Series DC Power Supply System

## SPS480VDC

MODEL		SPS480VDC18000W-2-19
<b>Input</b>		
Voltage	190~265VAC	
Frequency	47~63Hz	
Phase	3 Phase, 4Wire+Groud/Y Connect	
Max.Current	107A	
Input Power Max	20.5kW	
Power Factor at 220VAC Input, Full Load	0.98 Min. Active PFC	
Efficiency	>88% Max @Full Load and Units=3kW Model	
<b>Output</b>		
Output Voltage	0~480V	
Output Current	0~60A	
Output Power	18kW Max	
Load Regulation	Voltage	240mV
	Current	0.36A
Line Regulation	Voltage	0.02%F.S.+30mV
	Current	0.02%F.S.+15mA
Voltage Setting	Range	0~480V
	Resolution	10mV
	Accuracy	0.1%+0.1%F.S. at 0< Ouput Voltage =<75Vdc 0.05%+0.05%F.S. at 75Vdc< Ouput Voltage =<1200Vdc
Current Setting	Range	0~60A
	Resolution	2mA
	Accuracy	0.1%+0.10%F.S
Ripple	Voltage	120mVp-p/18mVrms
	Current	300mA(Full Range) 60mA(TYP Value)
<b>Measurement</b>		
Voltage Setting	Range	0~480V
	Resolution	10mV
	Accuracy	0.1%+0.1%F.S. at 0< Ouput Voltage =<75Vdc 0.05%+0.05%F.S. at 75Vdc< Ouput Voltage =<1200Vdc
Current Setting	Range	0~60A
	Resolution	2mA
	Accuracy	0.1%+0.10%F.S
<b>Extra Function</b>		
Remote Sense	Range	5V(DC), Max. Total power less than rated power
Comm. Response.	50ms	
Graphic Display	VFD	
Operation Key Feature	Soft key, Numeric key, Rotary Knob	
Rack mount Handles	Yes	
FAN	Temperature Control	
Protection Circuits	OCP, OVP, OPP, OTP, FAN	
Interface	USB, RS485, RS232(Standard); LAN, GPIB(Option)	
<b>Remote Control Input/Output signal characteristics</b>		
Remote Input signal	Not Support	
Remote output signal	Not Support	
<b>Environmental</b>		
Operating Temperature	0°C~40°C	
Storage Temperature	-20°C~70°C	
Altitude	2000m	
Relative Humidity	10%-90%, non-condensing	
Temperature Coefficient	100ppm/°C at Voltage, 300ppm/°C at Current	
<b>Mechanical</b>		
Dimensions(W*H*D)	600.0*843.0*700.0 mm	
Package Dimensions(W*H*D)	720.0*1160.0*820.0 mm	
Unit Weight	100.0kg+15kg*6 (REF)	
Shipping Weight	160.0kg+15kg*6 (REF)	
<b>Regulatory Compliance</b>		
CE Mark	Installation Overvoltage Category II; Class II equipment; indoor use only.	

\*F.S. represents the maximum value of the output range.

\*N stands for the number of installed power supply units, and N is greater than 1.

All specifications are subject to change without notice.

# SPS Series DC Power Supply System

## SPS600VDC

MODEL	SPS600VDC12000W-2-13		SPS600VDC24000W-2-19		SPS600VDC40000W-2-27	
<b>Input</b>						
Voltage	190~265VAC					
Frequency	47~63Hz					
Phase	3 Phase, 4Wire+Groud/Y Connect					
Max.Current	75A	150A		250A		
Input Power Max	15kW	28.5kW		47.5kW		
Power Factor at 220VAC Input, Full Load	0.98 Min. Active PFC					
Efficiency	>88% Max @Full Load and Units=4kW Model					
<b>Output</b>						
Output Voltage	0~600V					
Output Current	0~30A	0~60A		0~100A		
Output Power	12kW Max	24kW Max		40kW Max		
Load Regulation	Voltage	240mV	480mV		800mV	
	Current	30mA	60mA		100mA	
Line Regulation	Voltage	0.02%F.S.+30mV				
	Current	0.02%F.S.+15mA				
Voltage Setting	Range	0~600V				
	Resolution	1mV				
	Accuracy	0.1%+0.1%F.S. at 0< Ouput Voltage =<75Vdc 0.05%+0.05%F.S. at 75Vdc< Ouput Voltage =<1200Vdc				
Current Setting	Range	0~30A	0~60A		0~100A	
	Resolution	1mA				
	Accuracy	0.1%+0.10%F.S				
Ripple	Voltage	700mVp-p/80mVrms				
	Current	37.5mA(Full Range)	75mA(Full Range)		125mA(Full Range)	
		15mA(TYP Value)	30mA(TYP Value)		50mA(TYP Value)	
<b>Measurement</b>						
Voltage Setting	Range	0~600V				
	Resolution	1mV				
	Accuracy	0.1%+0.1%F.S. at 0< Ouput Voltage =<75Vdc 0.05%+0.05%F.S. at 75Vdc< Ouput Voltage =<1200Vdc				
Current Setting	Range	0~30A	0~60A		0~100A	
	Resolution	1mA				
	Accuracy	0.1%+0.10%F.S				
<b>Extra Function</b>						
Remote Sense	Range	5V(DC), Max. Total power less than rated power				
Comm. Responce.	50ms					
Graphic Display	VFD					
Operation Key Feature	Soft key, Numeric key, Rotary Knob					
Rack mount Handles	Yes					
FAN	Temperature Control					
Protection Circuits	OCP, OVP, OPP, OTP, FAN					
Interface	USB, RS485, RS232(Standard); LAN, GPIB(Optional)					
<b>Remote Control/Control signal/Output signal characteristics</b>						
Remote Input signal	Not Support					
Remote output signal	Not Support					
<b>Environmental</b>						
Operating Temperature	0°C~40°C					
Storage Temperature	-20°C~70°C					
Altitude	2000m					
Relative Humidity	10%-90%, non-condensing					
Temperature Coefficient	100ppm/°C at Voltage, 300ppm/°C at Current					
<b>Mechanical</b>						
Dimensions(W*H*D)	600.0*576.0*700.0 mm	600.0*843.0*700.0 mm		600.0*1196.0*700.0 mm		
Package Dimensions(W*H*D)	720.0*890.0*820.0 mm	720.0*1160.0*820.0 mm		720.0*1535.0*820.0 mm		
Unit Weight	54kg+15kg*3 (REF)	100.0kg+15kg*6 (REF)		120.0kg+15kg*10 (REF)		
Shipping Weight	94kg+15kg*3 (REF)	160.0kg+15kg*6 (REF)		200.0kg+15kg*10 (REF)		
<b>Regulatory Compliance</b>						
CE Mark	Installation Overvoltage Category II; Class II equipment; indoor use only.					

\*F.S. represents the maximum value of the output range.

\*N stands for the number of installed power supply units, and N is greater than 1.

All specifications are subject to change without notice.

# SPS Series DC Power Supply System

## SPS720VDC

MODEL		SPS720VDC24000W-2-19	
<b>Input</b>			
Voltage	190~265VAC		
Frequency	47~63Hz		
Phase	3 Phase, 4Wire+Groud/Y Connect		
Max.Current	150A		
Input Power Max	28.5kW		
Power Factor at 220VAC Input, Full Load	0.98 Min. Active PFC		
Efficiency	>88% Max @Full Load and Units=4kW Model		
<b>Output</b>			
Output Voltage	0~720V		
Output Current	0~40A		
Output Power	24kW Max		
Load Regulation	Voltage	240mV	
	Current	0.24A	
Line Regulation	Voltage	0.02%F.S.+30mV	
	Current	0.02%F.S.+15mA	
Voltage Setting	Range	0~720V	
	Resolution	10mV	
	Accuracy	0.1%+0.1%F.S. at 0< Ouput Voltage =<75Vdc 0.05%+0.05%F.S. at 75Vdc< Ouput Voltage =<1200Vdc	
Current Setting	Range	0~40A	
	Resolution	0.1mA	
	Accuracy	0.1%+0.10%F.S	
Ripple	Voltage	240mVp-p/45mVrms	
	Current	120mA(Full Range) 20mA(TYP Value)	
<b>Measurement</b>			
Voltage Setting	Range	0~720V	
	Resolution	10mV	
	Accuracy	0.1%+0.1%F.S. at 0< Ouput Voltage =<75Vdc 0.05%+0.05%F.S. at 75Vdc< Ouput Voltage =<1200Vdc	
Current Setting	Range	0~40A	
	Resolution	0.1mA	
	Accuracy	0.1%+0.10%F.S	
<b>Extra Function</b>			
Remote Sense	Range	5V(DC), Max. Total power less than rated power	
Comm. Response.	50ms		
Graphic Display	VFD		
Operation Key Feature	Soft key, Numeric key, Rotary Knob		
Rack mount Handles	Yes		
FAN	Temperature Control		
Protection Circuits	OCP, OVP, OPP, OTP, FAN		
Interface	USB, RS485, RS232(Standard); LAN, GPIB(Option)		
<b>Remote Control Input/Output signal characteristics</b>			
Remote Input signal	Not Support		
Remote output signal	Not Support		
<b>Environmental</b>			
Operating Temperature	0°C~40°C		
Storage Temperature	-20°C~70°C		
Altitude	2000m		
Relative Humidity	10%-90%, non-condensing		
Temperature Coefficient	100ppm/°C at Voltage, 300ppm/°C at Current		
<b>Mechanical</b>			
Dimensions(W*H*D)	600.0*843.0*700.0 mm		
Package Dimensions(W*H*D)	720.0*1160.0*820.0 mm		
Unit Weight	100.0kg+15kg*6 (REF)		
Shipping Weight	160.0kg+15kg*6 (REF)		
<b>Regulatory Compliance</b>			
CE Mark	Installation Overvoltage Category II; Class II equipment; indoor use only.		

\*F.S. represents the maximum value of the output range.

\*N stands for the number of installed power supply units, and N is greater than 1.

All specifications are subject to change without notice.

# SPS Series DC Power Supply System

## SPS750VDC

MODEL		SPS750VDC40000W-2-27
<b>Input</b>		
Voltage	190~265VAC	
Frequency	47~63Hz	
Phase	3 Phase, 4Wire+Groud/Y Connect	
Max.Current	250A	
Input Power Max	47.5kW	
Power Factor at 220VAC Input, Full Load	0.98 Min. Active PFC	
Efficiency	>88% Max @Full Load and Units=4kW Model	
<b>Output</b>		
Output Voltage	0~750V	
Output Current	0~60A	
Output Power	40kW Max	
Load Regulation	Voltage	400mV
	Current	0.6A
Line Regulation	Voltage	0.02%F.S.+30mV
	Current	0.02%F.S.+15mA
Voltage Setting	Range	0~750V
	Resolution	10mV
	Accuracy	0.1%+0.1%F.S. at 0< Ouput Voltage =<75Vdc 0.05%+0.05%F.S. at 75Vdc< Ouput Voltage =<1200Vdc
Current Setting	Range	0~60A
	Resolution	0.1mA
	Accuracy	0.1%+0.10%F.S
Ripple	Voltage	200mVp-p/40mVrms
	Current	120mA(Full Range) 20mA(TYP Value)
<b>Measurement</b>		
Voltage Setting	Range	0~750V
	Resolution	10mV
	Accuracy	0.1%+0.1%F.S. at 0< Ouput Voltage =<75Vdc 0.05%+0.05%F.S. at 75Vdc< Ouput Voltage =<1200Vdc
Current Setting	Range	0~60A
	Resolution	0.1mA
	Accuracy	0.1%+0.10%F.S
<b>Extra Function</b>		
Remote Sense	Range	5V(DC), Max. Total power less than rated power
Comm. Response.	50ms	
Graphic Display	VFD	
Operation Key Feature	Soft key, Numeric key, Rotary Knob	
Rack mount Handles	Yes	
FAN	Temperature Control	
Protection Circuits	OCP, OVP, OPP, OTP, FAN	
Interface	USB, RS485, RS232(Standard); LAN, GPIB(Option)	
<b>Remote Control Input/Output signal characteristics</b>		
Remote Input signal	Not Support	
Remote output signal	Not Support	
<b>Environmental</b>		
Operating Temperature	0°C~40°C	
Storage Temperature	-20°C~70°C	
Altitude	2000m	
Relative Humidity	10%-90%, non-condensing	
Temperature Coefficient	100ppm/°C at Voltage, 300ppm/°C at Current	
<b>Mechanical</b>		
Dimensions(W*H*D)	600.0*1196.0*700.0 mm	
Package Dimensions(W*H*D)	720.0*1535.0*820.0 mm	
Unit Weight	120.0kg+15kg*10 (REF)	
Shipping Weight	200.0kg+15kg*10 (REF)	
<b>Regulatory Compliance</b>		
CE Mark	Installation Overvoltage Category II; Class II equipment; indoor use only.	

\*F.S. represents the maximum value of the output range.

\*N stands for the number of installed power supply units, and N is greater than 1.

All specifications are subject to change without notice.

# SPS Series DC Power Supply System

## SPS800VDC

MODEL	SPS800VDC12000W-2-13		SPS800VDC24000W-2-19		SPS800VDC30000W-2-27		SPS800VDC40000W-2-27	
<b>Input</b>								
Voltage	190~265VAC							
Frequency	47~63Hz							
Phase	3 Phase, 4Wire+Groud/Y Connect							
Max.Current	75A	150A	178A	250A				
Input Power Max	15kW	28.5kW	34kW	47.5kW				
Power Factor at 220VAC Input, Full Load	0.98 Min. Active PFC							
Efficiency	>88% Max @Full Load and Units=4kW Model		>88% Max @Full Load and Units=4kW Model		>88% Max @Full Load and Units=3kW Model		>88% Max @Full Load and Units=4kW Model	
<b>Output</b>								
Output Voltage	0~800V							
Output Current	0~22.5A	0~45A	0~60A	0~75A				
Output Power	12kW Max	24kW Max	30kW Max	40kW Max				
Load Regulation	Voltage	1.5V	3V	400mV		5V		
	Current	22.5mA	45mA	0.6A		75mA		
Line Regulation	Voltage	0.02%F.S.+30mV						
	Current	0.02%F.S.+15mA						
Voltage Setting	Range	0~800V						
	Resolution	1mV	1mV	10mV		1mV		
	Accuracy	0.1%+0.1%F.S. at 0< Ouput Voltage =<75Vdc 0.05%+0.05%F.S. at 75Vdc< Ouput Voltage =<1200Vdc						
Current Setting	Range	0~22.5A	0~45A	0~60A	0~75A			
	Resolution	1mA	1mA	2mA	1mA			
	Accuracy	0.1%+0.10%F.S						
Ripple	Voltage	1600mVp-p/400mVrms	1600mVp-p/400mVrms	200mVp-p/30mVrms		1600mVp-p/400mVrms		
	Current	37.5mA(Full Range) 15mA(TYP Value)	75mA(Full Range) 30mA(TYP Value)	500mA(Full Range) 100mA(TYP Value)		125mA(Full Range) 50mA(TYP Value)		
<b>Measurement</b>								
Voltage Setting	Range	0~800V						
	Resolution	1mV	1mV	10mV		1mV		
	Accuracy	0.1%+0.1%F.S. at 0< Ouput Voltage =<75Vdc 0.05%+0.05%F.S. at 75Vdc< Ouput Voltage =<1200Vdc						
Current Setting	Range	0~22.5A	0~45A	0~60A	0~75A			
	Resolution	1mA	1mA	2mA	1mA			
	Accuracy	0.1%+0.10%F.S						
<b>Extra Function</b>								
Remote Sense	Range	5V(DC), Max. Total power less than rated power						
Comm. Response.	50ms							
Graphic Display	VFD							
Operation Key Feature	Soft key, Numeric key, Rotary Knob							
Rack mount Handles	Yes							
FAN	Temperature Control							
Protection Circuits	OCP, OVP, OPP, OTP, FAN							
Interface	USB, RS485, RS232(Standard); LAN, GPIB(Optional)							
<b>Remote Control Input/Output signal characteristics</b>								
Remote Input signal	Not Support							
Remote output signal	Not Support							
<b>Environmental</b>								
Operating Temperature	0°C~40°C							
Storage Temperature	-20°C~70°C							
Altitude	2000m							
Relative Humidity	10%-90%, non-condensing							
Temperature Coefficient	100ppm/°C at Voltage, 300ppm/°C at Current							
<b>Mechanical</b>								
Dimensions(W*H*D)	600.0*576.0*700.0 mm	600.0*843.0*700.0 mm	600.0*1196.0*700.0 mm	600.0*1196.0*700.0 mm				
Package Dimensions(W*H*D)	720.0*890.0*820.0 mm	720.0*1160.0*820.0 mm	720.0*1535.0*820.0 mm	720.0*1535.0*820.0 mm				
Unit Weight	54kg+15kg*3 (REF)	100.0kg+15kg*6 (REF)	120.0kg+15kg*10 (REF)	120.0kg+15kg*10 (REF)				
Shipping Weight	94kg+15kg*3 (REF)	160.0kg+15kg*6 (REF)	200.0kg+15kg*10 (REF)	200.0kg+15kg*10 (REF)				
<b>Regulatory Compliance</b>								
CE Mark	Installation Overvoltage Category II; Class II equipment; indoor use only.							

\*F.S. represents the maximum value of the output range.

\*N stands for the number of installed power supply units, and N is greater than 1.

All specifications are subject to change without notice.

# SPS Series DC Power Supply System

## SPS900VDC

MODEL		SPS900VDC24000W-2-13
<b>Input</b>		
Voltage	190~265VAC	
Frequency	47~63Hz	
Phase	3 Phase, 4Wire+Groud/Y Connect	
Max.Current	150A	
Input Power Max	28.5kW	
Power Factor at 220VAC Input, Full Load	0.98 Min. Active PFC	
Efficiency	>88% Max @Full Load and Units=4kW Model	
<b>Output</b>		
Output Voltage	0~900V	
Output Current	0~30A	
Output Power	24kW Max	
Load Regulation	Voltage	240mV
	Current	0.18A
Line Regulation	Voltage	0.02%F.S.+30mV
	Current	0.02%F.S.+15mA
Voltage Setting	Range	0~900V
	Resolution	10mV
	Accuracy	0.1%+0.1%F.S. at 0< Ouput Voltage =<75Vdc 0.05%+0.05%F.S. at 75Vdc< Ouput Voltage =<1200Vdc
Current Setting	Range	0~30A
	Resolution	0.1mA
	Accuracy	0.1%+0.10%F.S
Ripple	Voltage	240mVp-p/45mVrms
	Current	120mA(Full Range) 20mA(TYP Value)
<b>Measurement</b>		
Voltage Setting	Range	0~900V
	Resolution	10mV
	Accuracy	0.1%+0.1%F.S. at 0< Ouput Voltage =<75Vdc 0.05%+0.05%F.S. at 75Vdc< Ouput Voltage =<1200Vdc
Current Setting	Range	0~30A
	Resolution	0.1mA
	Accuracy	0.1%+0.10%F.S
<b>Extra Function</b>		
Remote Sense	Range	5V(DC), Max. Total power less than rated power
Comm. Response.	50ms	
Graphic Display	VFD	
Operation Key Feature	Soft key, Numeric key, Rotary Knob	
Rack mount Handles	Yes	
FAN	Temperature Control	
Protection Circuits	OCP, OVP, OPP, OTP, FAN	
Interface	USB, RS485, RS232(Standard); LAN, GPIB(Option)	
<b>Remote Control Input/Output signal characteristics</b>		
Remote Input signal	Not Support	
Remote output signal	Not Support	
<b>Environmental</b>		
Operating Temperature	0°C~40°C	
Storage Temperature	-20°C~70°C	
Altitude	2000m	
Relative Humidity	10%-90%, non-condensing	
Temperature Coefficient	100ppm/°C at Voltage, 300ppm/°C at Current	
<b>Mechanical</b>		
Dimensions(W*H*D)	600.0*843.0*700.0 mm	
Package Dimensions(W*H*D)	720.0*1160.0*820.0 mm	
Unit Weight	100.0kg+15kg*6 (REF)	
Shipping Weight	160.0kg+15kg*6 (REF)	
<b>Regulatory Compliance</b>		
CE Mark	Installation Overvoltage Category II; Class II equipment; indoor use only.	

\*F.S. represents the maximum value of the output range.

\*N stands for the number of installed power supply units, and N is greater than 1.

All specifications are subject to change without notice.

# SPS Series DC Power Supply System

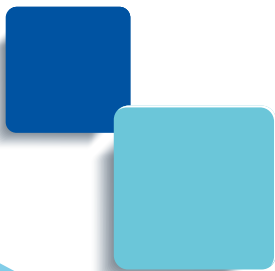
## SPS1200VDC

MODEL		SPS1200VDC24000W-2-19	SPS1200VDC40000W-2-27
<b>Input</b>			
Voltage	190~265VAC		
Frequency	47~63Hz		
Phase	3 Phase, 4Wire+Groud/Y Connect		
Max.Current	150A	250A	
Input Power Max	28.5kW	47.5kW	
Power Factor at 220VAC Input, Full Load	0.98 Min. Active PFC		
Efficiency	>88% Max @Full Load and Units=4kW Model		
<b>Output</b>			
Output Voltage	0~1200V		
Output Current	0~24A	0~40A	
Output Power	24kW Max	40kW Max	
Load Regulation	Voltage	360mV	400mV
	Current	144mA	0.4A
Line Regulation	Voltage	0.02%F.S.+30mV	
	Current	0.02%F.S.+15mA	
Voltage Setting	Range	0~1200V	
	Resolution	0.1V	
	Accuracy	0.1%+0.1%F.S. at 0< Ouput Voltage =<75Vdc 0.05%+0.05%F.S. at 75Vdc< Ouput Voltage =<1200Vdc	
Current Setting	Range	0~24A	0~40A
	Resolution	0.1mA	
	Accuracy	0.1%+0.10%F.S	
Ripple	Voltage	450mVp-p/90mVrms	400mVp-p/75mVrms
	Current	100mA(Full Range)	120mA(Full Range)
		40mA(TYP Value)	20mA(TYP Value)
<b>Measurement</b>			
Voltage Setting	Range	0~1200V	0~1200V
	Resolution	0.1V	
	Accuracy	0.1%+0.1%F.S. at 0< Ouput Voltage =<75Vdc 0.05%+0.05%F.S. at 75Vdc< Ouput Voltage =<1200Vdc	
Current Setting	Range	0~24A	0~40A
	Resolution	0.1mA	
	Accuracy	0.1%+0.10%F.S	
<b>Extra Function</b>			
Remote Sense	Range	5V(DC), Max. Total power less than rated power	
Comm. Response.	50ms		
Graphic Display	VFD		
Operation Key Feature	Soft key, Numeric key, Rotary Knob		
Rack mount Handles	Yes		
FAN	Temperature Control		
Protection Circuits	OCP, OVP, OPP, OTP, FAN		
Interface	USB, RS485, RS232(Standard); LAN, GPIB(Optional)		
<b>Remote Control Input/Output signal characteristics</b>			
Remote Input signal	Not Support		
Remote output signal	Not Support		
<b>Environmental</b>			
Operating Temperature	0°C~40°C		
Storage Temperature	-20°C~70°C		
Altitude	2000m		
Relative Humidity	10%-90%, non-condensing		
Temperature Coefficient	100ppm/°C at Voltage, 300ppm/°C at Current		
<b>Mechanical</b>			
Dimensions(W*H*D)	600.0*843.0*700.0 mm	600.0*1196.0*700.0 mm	
Package Dimensions(W*H*D)	720.0*1160.0*820.0 mm	720.0*1535.0*820.0 mm	
Unit Weight	100.0kg+15kg*6 (REF)	120.0kg+15kg*10 (REF)	
Shipping Weight	160.0kg+15kg*6 (REF)	200.0kg+15kg*10 (REF)	
<b>Regulatory Compliance</b>			
CE Mark	Installation Overvoltage Category II; Class II equipment; indoor use only.		

\*F.S. represents the maximum value of the output range.

\*N stands for the number of installed power supply units, and N is greater than 1.

All specifications are subject to change without notice.



**APM Technologies Ltd**

---

Add:#7, Link Industry Park, Kechuang Road, Nancheng,  
Dongguan, Guangdong, China

Tel:+86 769-2202 8588 ext:2892 Fax:+86 769-2202 6771

E-mail:overseas@apmtech.cn Web:www.apmtechate.com