

HIOKI

NON-CONTACT CAN SENSOR SP7001, SP7002

NEW Preview

CAN FD / CAN

for illustrative purposes only

CAN FD / CAN Non-contact sensing

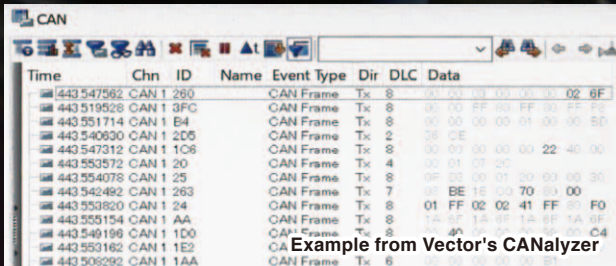
over cable insulation without metal contact

Scheduled to launch at the end of 2019

Reliability

**Complete measurement assurance
by capturing the entire signal**

Brings accuracy to automotive development and evaluation testing by preventing erroneous judgments caused by faulty detection. Also captures low-frequency events with a high degree of reliability.



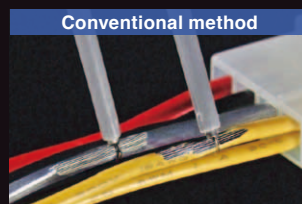
Time	Chn	ID	Name	Event Type	Dir	DLC	Data
443 547582	CAN 1	280		CAN Frame	Tx	8	00 00 FF 00 00 00 00 00 00 00 00 00 00 00 00 00 00
443 519528	CAN 1	3FC		CAN Frame	Tx	8	00 00 FF 00 00 00 00 00 00 00 00 00 00 00 00 00 00
443 551714	CAN 1	E4		CAN Frame	Tx	8	00 00 00 00 00 00 00 00 00 00 00 00 00 00 00 00
443 540630	CAN 1	205		CAN Frame	Tx	2	08 CE
443 547312	CAN 1	106		CAN Frame	Tx	8	00 01 00 00 00 00 00 22 40 00
443 553572	CAN 1	20		CAN Frame	Tx	4	01 01 00 2C
443 554078	CAN 1	25		CAN Frame	Tx	8	00 00 00 01 00 00 00 00 30
443 542492	CAN 1	263		CAN Frame	Tx	7	00 00 1E 00 70 00 00
443 553820	CAN 1	24		CAN Frame	Tx	8	01 FF 02 02 41 FF 00 00
443 555154	CAN 1	AA		CAN Frame	Tx	8	14 0F 1A 00 1A 0F 1A 0F
443 549196	CAN 1	1D0		CAN Frame	Tx	8	14 0F 1A 00 1A 0F 1A 0F
443 553182	CAN 1	1E2		CAN Frame	Tx	8	14 0F 1A 00 1A 0F 1A 0F
443 508292	CAN 1	1AA		CAN Frame	Tx	8	14 0F 1A 00 1A 0F 1A 0F

Example from Vector's CANalyzer

Consistent performance

**Avoid damage to the cable
No impact to CAN bus characteristics**

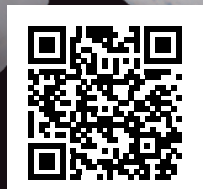
The SP7001/SP7002 uses a no-metal-contact detection method that requires no contact with CAN bus electric circuitry. The technology allows evaluation testing to be carried out on public roads since test vehicles do not need to be modified.



**50-sec.
introductory video**



0:00 / 0:52



<https://www.youtube.com/embed/XdHYFXRkIQ4?rel=0>

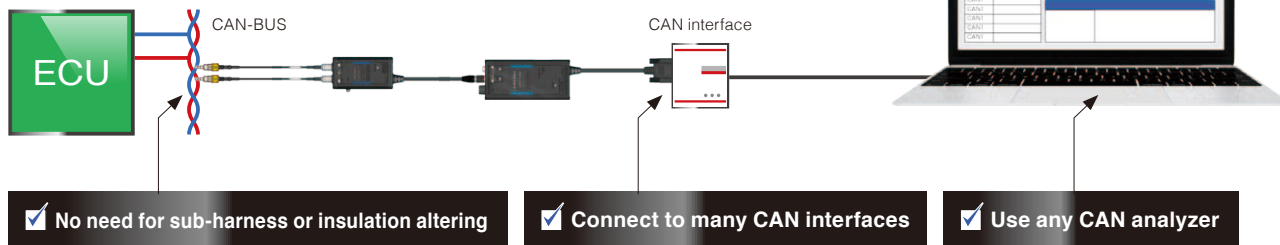
Essential tool for development of next generation CAN FD vehicles

Simple operation

Keep using your favorite CAN interface

Use your preferred CAN analyzer

If you already have a CAN FD/CAN analysis system, you can start using the product right away - simply connect it to your system's input terminal (D-sub 9-pin connector).



✓ No need for sub-harness or insulation altering

✓ Connect to many CAN interfaces

✓ Use any CAN analyzer

Specifications

Specifications	CAN FD / CAN compatible	CAN compatible
Model number (order code)	SP7001-90	SP7002-90
Supported transmission speeds	CAN FD : 125 kbit/s to 3 Mbit/s CAN : 125 kbit/s to 1 Mbit/s	CAN : 125 kbit/s to 1 Mbit/s
Target cables	Outer diameter of 1.2 to 2.0 mm (0.05 to 0.08 in)	
Operating temperature range	-40°C to 85°C (-40°F to 185°F)	
Package contents Figures in parentheses indicate cable lengths.	<p>« CAN bus connection » SP9200 (0.5 m) (1.64 ft)</p> <p>« Signal probe connection » SP7001 / SP7002 (2.5 m) (8.20 ft)</p> <p>« CAN interface connection » SP7100 (0.3 m) (0.98 ft)</p> <p>« Ground connection » ALLIGATOR CLIP (GND cable 1.5 m) (4.92 ft)</p> <p>« 12 to 24 V DC power supply connection » L9500 (2.0 m) (6.56 ft)</p> <p>The device can also be powered from an outlet using the optional AC Adapter Z1008.</p>	
	<p>NON-CONTACT CAN SENSOR SP7001 × 1 NON-CONTACT CAN SENSOR SP7002 × 1</p> <p>CAN INTERFACE SP7100, SIGNAL PROBE SP9200, POWER CABLE L9500, ALLIGATOR CLIP (GND cable) × 1</p>	

2-channel simultaneous detection



Since one CAN interface can accommodate two channels of input, you can detect two channels at once by purchasing an additional non-contact CAN sensor.

Product combinations for 2-channel detection	SP7001-90 SP9200 SP7001	SP7002-90 SP9200 SP7002

Combine freely

You can also use the SP7001 and SP7002 together in a single system.

Standalone products and options

<p>SIGNAL PROBE SP9200 Set of 2</p>	<p>NON-CONTACT CAN SENSOR SP7001 CAN FD / CAN compatible</p>	<p>NON-CONTACT CAN SENSOR SP7002 CAN compatible</p>	<p>CAN INTERFACE SP7100 L9500, ALLIGATOR CLIP (GND cable) included</p>
<p>POWER CABLE L9500 For supplying 12 to 24 V DC</p>	<p>AC ADAPTER Z1008 For supplying 100 to 240 V AC</p>	<p>SPLIT CABLE SP9900 For branching channel 1 and 2 output</p>	<p>CARRYING CASE C1013 Rigid case</p>

Note: Company names and product names appearing in this catalog are trademarks or registered trademarks of various companies.

HIOKI
HIOKI E. E. CORPORATION

DISTRIBUTED BY

HEADQUARTERS
81 Koizumi,
Ueda, Nagano 386-1192 Japan
<https://www.hioki.com/>



Scan for all regional contact information