

PCD 126

Coupling Network for Asymmetrical Data and Control Lines

■ The **PCD 126A** is used for surge coupling of 1,2/50us - 8/20us combination wave impulses onto unshielded asymmetrical data and signal lines according to IEC/EN standards. It is also used for surge coupling ring wave impulses onto both unshielded asymmetrical and symmetrical data and control lines according to IEC/EN standards. Up to 6.6 kV peak value are possible. Up to 4 wires can be tested simultaneously.

To obtain maximum flexibility only coupling elements are included in the PCD 126A. Decoupling circuits, which depends on the EUT to be tested, can be placed separately in the test setup.

Manual coupling path switching for common mode (longitudinal, line to earth) and differential mode (transversal, line to line) testing.

Default coupling elements are capacitors, breakdown avalanche diodes and gas arrestors. The coupling elements can be selected easily. The direct coupling output allows the customer to use his own coupling elements.

The PCD 126A can be used together with the impulse modules PIM 100 and PIM 110 from the Surge Platform and the PSURGE 4010. These provide all the programming functions required to perform IEC, ANSI and EN testing also without the need of a control computer.

With a 100 year history of innovation, service centers on three continents and a full staff development and support engineers, HAEFELY HIPOTRONICS is the clear choice for all your transient immunity test needs.



FEATURES

- Combination wave 1,2/50us - 8/20us impulses
- Serial resistor 40 Ohm included
- Ringwave 100kHz impulses
- Up to 4 wires can be tested
- Signal Bandwidth up to some MHz
- Manual coupling path selection

BENEFITS

International Application – Specifically designed to meet and exceed the requirements of:

- IEC / EN 61000-4-5 Edition 1 Figures 10 and 11 (combination wave)
- IEC / EN 61000-4-5 Edition 2 Figures 11, 12 and 13 (combination wave)
- IEC / EN 61000-4-12 Edition 1 Figures 9, 10, 13 and 14 (ring wave)
- IEC / EN 61000-4-12 Edition 2 Figures 9, 10 and 11

Safe and Easy - All the sockets are safety banana plugs to ensure maximum safety to the user. The selected coupling path can be seen at a glimpse.

Sturdy and Reliable – Careful component selection ensures that the PCD 126A will continue to operate under the most strenuous testing regimen.

Report Generation - The unit controller can automatically generate test reports without a computer. Add WinFEAT&R control and reporting software on a host PC to collect and collate data in any format you like.

APPLICATIONS

- Unshielded asymmetrical data and signal lines
- Unshielded symmetrical data and signal lines (ring wave testing only)
- Industrial equipment
- Other international requirements for combination wave and ring wave impulses on asymmetrical data- and control lines

TECHNICAL SPECIFICATIONS

| | | |
|----------------------|--|---|
| Impulse shape | Combination wave 1,2/50us - 8/20us Ring wave 100kHz | Z = 2 Ohm Z = 12 Ohm, 30 Ohm and 200 Ohm |
| Impulse amplitude | max. 6.6kV | for both impulse shapes |
| Serial Resistor | 1 x 40Ω | for testing according IEC 61000-4-5 |
| Coupling elements | Capacitor 0.5uF / 3uF Avalanche breakdown diode (ABD) Avalanche breakdown diodes (ABDs) Gas arrestors Direct | for asymmetrical lines, both impulse shapes for asymmetrical lines, both impulse shapes for symmetrical lines, ring wave only for symmetrical lines, ring wave only for customer specific coupling elements |
| Voltage on EUT lines | max. 375V _{DC} or 265V _{AC,RMS} max. 72V _{DC} or 50V _{AC,RMS} | with capacitors as coupling elements with ABDs or gas arrestors as coupling elements |
| Signal bandwidth | up to > 1kHz up to > 1MHz up to > 10MHz | with capacitors as coupling elements with ABDs as coupling elements with gas arrestors as coupling elements |

Weight and Dimensions

| | |
|-------------------|-------------------------------|
| approx. 12 kg net | 45 x 19.5 x 57 cm (w x h x d) |
|-------------------|-------------------------------|

Other decoupling elements on request.

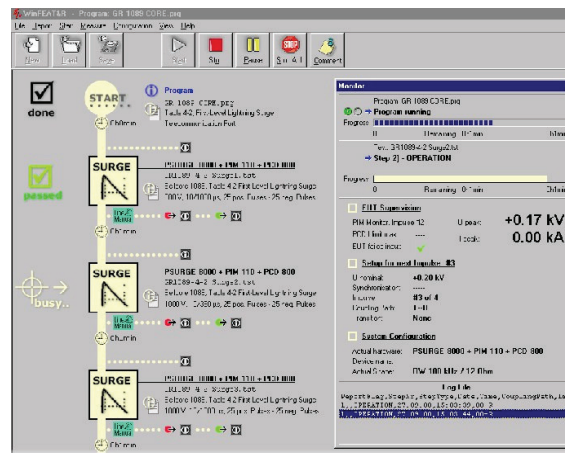
PCD 126 ART. NO. 2498030

- Qty. 1 PCD 126A
- Qty. 1 HV cable Fischer - Fischer
- Qty. 1 Cable set
- Qty. 1 Short circuit bridge
- Qty. 1 Users Manual

OPTIONS AND ACCESSORIES

- DEC 5 Decoupling unit for symmetrical lines according IEC 61000-4-5 and IEC 61000-4-12.
- DEC 7 Decoupling unit for asymmetrical lines according IEC 61000-4-5 and IEC 61000-4-12.
- PSURGE 8000 Mainframe of the Surge Platform
- PIM 100 Combination Wave module up to 7.3kV
- PIM 110 Ring wave module up to 7.8kV with Z=12 Ohm, 30 Ohm and 200 Ohm
- AXOS5 Compact Tester up to 5.0kV

WinFEAT&R Control Window



OFFICES:

Europe

Haefely Test AG
Birsstrasse 300
4052 Basel
Switzerland

+ 41 61 373 4111
+ 41 61 373 4912
sales@haefely.com

China

Haefely Test AG Representative Beijing Office
8-1-602, Fortune Street
No. 67, Chaoyang Road, Chaoyang District
Beijing, China 100025

+ 86 10 8578 8099
+ 86 10 8578 9908
sales@haefely.com.cn

North America

Hipotronics, Inc.
1650 Route 22 N
Brewster, NY 10509
United States

+ 1 845 279 3644
+ 1 845 279 2467
sales@hipotronics.com