

# PCD 121

Coupling Network for Symmetrical Data and Control Lines

■ The **PCD 121** is used for coupling of 1,2/50us - 8/20us combination wave impulses up to 6.6kV peak onto unshielded symmetrical data and signal lines according IEC/EN standards. Up to 2 pairs / 4 wires can be tested simultaneously.

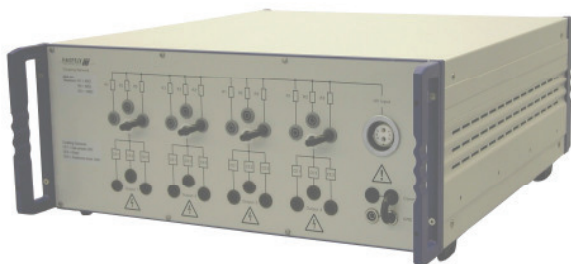
To obtain maximum flexibility only coupling elements are included in the PCD 121. Decoupling circuits, which depends on the EUT to be tested, can be placed separately in the test setup.

**Manual coupling path switching** for common mode (longitudinal, line to earth) as well as differential mode (transversal, line to line) testing.

**Default coupling elements** are gas arrestors and breakdown avalanche diodes. The coupling elements can be selected easily. The direct coupling output allows the customer to use his own coupling elements.

The PCD 121 can be used together with the impulse modules PIM 100 from the Surge Platform and the impulse generator PSURGE 4010. These provide all the programming functions required to perform IEC, ANSI and EN testing also without the need of a control computer.

With a 100 year history of innovation, service centers on three continents and a full staff development and support engineers, HAEFELY HIPOTRONICS is the clear choice for all your transient immunity test needs.



## FEATURES

- Combination wave 1,2/50us - 8/20us impulse
- Serial resistors included
- Up to 2 pairs / 4 wires can be tested
- Signal Bandwidth up to >10MHz
- Low capacitive load on the EUT lines
- Manual coupling path selection

## BENEFITS

**International application** – Specifically designed to meet and exceed the requirements of:

- IEC / EN 61000-4-5 Edition 1 Figure 12
- IEC / EN 61000-4-5 Edition 2 Figure 14

**Safe and Easy** - All the sockets are safety banana plugs to ensure maximum safety to the user. The selected coupling path can be seen at a glimpse.

**Sturdy and Reliable** – Careful component selection ensures that the PCD 121 will continue to operate under the most strenuous testing regimen.

**Report Generation** - The unit controller can automatically generate test reports without a computer. Add WinFEAT&R control and reporting software on a host PC to collect and collate data in any format you like.

## APPLICATIONS

- Single phase power line systems
- Surge tests with combination wave 1.2/50us - 8/20us and ring wave 100kHz

## TECHNICAL SPECIFICATIONS

Impulse shape	Combination wave 1,2/50µs-8/20µs	impulse shape defined at the generator output only
Impulse amplitude	max. 6.6kV	
Serial Resistor	4 x 40 Ohm 4 x 80 Ohm 4 x 160 Ohm	
Coupling elements	Gas arrestors 90V Avalanche breakdown diodes (ABDs)	
Voltage on EUT lines	max. 72V <sub>DC</sub> or 50V <sub>AC,RMS</sub> max. 144V <sub>DC</sub> or 100V <sub>AC,RMS</sub>	with gas arrestors as coupling elements with ABDs as coupling elements
Signal bandwidth	up to >10MHz up to >1MHz	with gas arrestors as coupling elements with ABDs as coupling elements

Other decoupling elements on request.

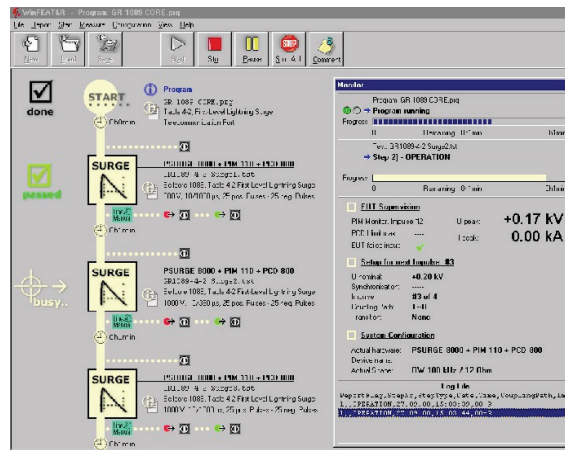
## PCD 121 ART. NO. 2498010

Qty. 1	PCD 121
Qty. 1	HV cable Fischer -Fischer 1m
Qty. 1	Cable set
Qty. 5	Short circuit bridges
Qty. 1	Users Manual

## OPTIONS AND ACCESSORIES

DEC 5	Decoupling unit with current compensated inductors as decoupling elements according IEC 61000-4-5 Edition 2 and ITU K.44.
PSURGE 8000	Mainframe of the Surge Platform
PIM 100	Combination Wave module up to 7.3kV
AXOS5	Combination wave generator up to 5.0kv
WinFEAT&R	Control and reporting software. Runs under windows 98, NT, ME, 2000, XP
ECOMPACT 4	Compact tester up to 4.2kV

## WinFEAT&R Control Window



## OFFICES:

### Europe

Haefely Test AG  
Birsstrasse 300  
4052 Basel  
Switzerland

+ 41 61 373 4111  
+ 41 61 373 4912  
sales@haefely.com

### China

Haefely Test AG Representative Beijing Office  
8-1-602, Fortune Street  
No. 67, Chaoyang Road, Chaoyang District  
Beijing, China 100025

+ 86 10 8578 8099  
+ 86 10 8578 9908  
sales@haefely.com.cn

### North America

Hipotronics, Inc.  
1650 Route 22 N  
Brewster, NY 10509  
United States

+ 1 845 279 3644  
+ 1 845 279 2467  
sales@hipotronics.com