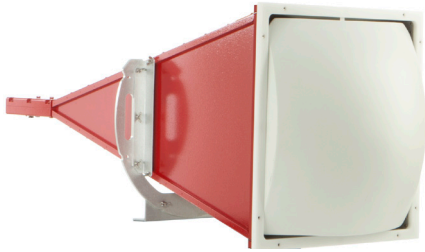


# FIELD GENERATING HORN WITH LENS MODEL 3162-04



**ETS-Lindgren's Model 3162-04 Horn Antenna** is a revolutionary antenna for EMC Immunity Testing. Its lightweight meta-material lens increases the gain of the horn at 1 m distance by 9 dBi. This characteristic makes the antenna ideal for immunity at 1 m as required by MIL-STD-461, RTCA DO 160 and automotive component immunity. Its frequency range ensures that it covers both radar pulse bands described in GMW 3097 and EMC-CS-2009.

For mounting, an optional 7-TR is recommended.

## MODEL 3162-04

- **Frequency Range:**  
1 GHz to 3.1 GHz
- **Max Input Power:**  
750 Watts at 1 GHz  
500 Watts at 3.1 GHz
- **Illumination area at 1 m:**  
15 cm x 15 cm  
(5.9 in x 5.9 in)

## Technical Specifications

### Electrical

Frequency Range	1 GHz to 3.1 GHz
VSWR:	<2.1:1 maximum
Maximum Continuous Power	750 watts @ 1 GHz 500 watts @ 3.1 GHz
Connectors	Type N Female

### Physical

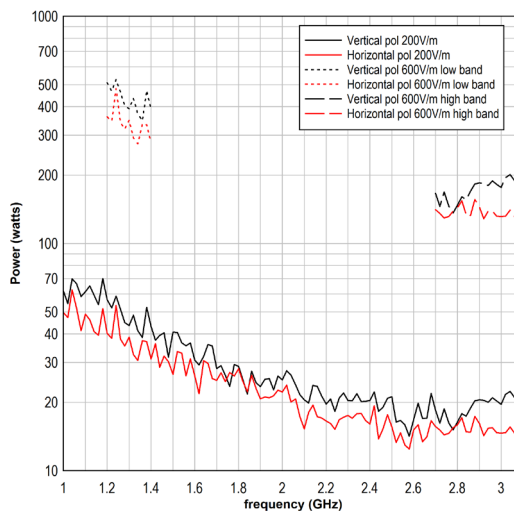
Height	53.81 cm 21.18 in
Width	53.65 cm 21.12 in
Length	138.50 cm 54.52 in
Weight	17.00 kg 37.00 lbs

1 GHz to 3.1 GHz

# FIELD GENERATING HORN WITH LENS MODEL 3162-04

1 GHz to 3.1 GHz

Typical Power for Non-conductive Bench



Typical Power for Conductive Bench

