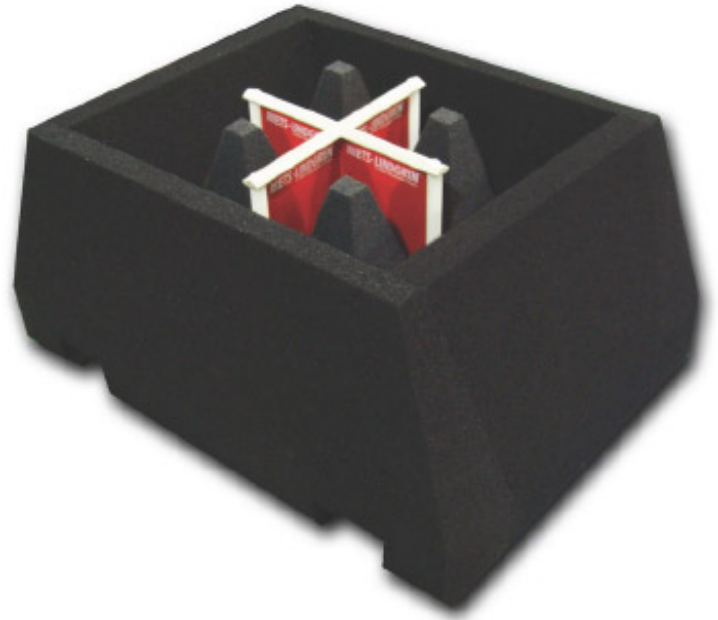


3165-01 Absorber Nested Dual-Polarized Dual-Vivaldi Array Antenna

ets-lindgren.com/datasheet/antennas/absorber-nested-dual-polarized-dual-ivaldi-array-antenna/4004/400401

- ETS-Lindgren's Model 3165-01 Absorber Nested Dual-Polarized Dual-Vivaldi Array Antenna is designed for applications where source antenna effects must be minimized, such as chambers where the device under test (DUT) is illuminated from different directions.



Key Features

- **700 MHz to 6 GHz Frequency Range**
- **Low Reflectivity**
- **Dual Linearly Polarized**
- **Low VSWR with High Directivity**
- **Multiple Mounting Schemes**

Features

Frequency Range

The model 3165-01 has a frequency range of 700 MHz to 6 GHz, which covers most cell phone, Wi-Fi, WiMAX and GPS bands.

Low Reflectivity

This antenna is designed to be nested in the anechoic absorber lining of a chamber. Installed in this configuration, the model 3165-01 antenna exhibits very low reflectivity, even when the input ports are mismatched. The normal incidence reflectivity is

approximately -40 dB for a majority of the frequency range.

Dual-Linear Polarization

The model 3165-01 is a dual-linearly polarized antenna, capable of measuring two orthogonal components of the field simultaneously.

Low VSWR and High Directivity

The model 3165-01 possesses very low VSWR, while maintaining high directivity. This allows use in the illumination of DUTs, without affecting adjacent antennas in a multi-antenna installation.

Frequency Minimum: 700 MHz

Frequency Maximum: 6 GHz

Cross Polarization Isolation: >25 dB

Maximum Continuous Power: 5 W

Connectors: (2) SMA Female

Impedance: 50 Ω

Pattern Type: Directional

Polarization: Dual-Linear

| Model | Aperture Height | Aperture Width | Length | Width |
|-------|-----------------|----------------|--------|-------|
|-------|-----------------|----------------|--------|-------|

| | | | | |
|------------|-------------------|-------------------|-------------------|-----------------|
| 3165-01-MG | 17.8 cm (7.0 in) | 19.0 cm (7.5 in) | 19.0 cm (7.5 in) | 1.3 kg (2.9 lb) |
| 3165-01-SQ | 35.5 cm (14.0 in) | 35.5 cm (14.0 in) | 36.3 cm (14.3 in) | 2.6 kg (5.8 lb) |
| 3165-01-RD | 35.5 cm (14.0 in) | 35.5 cm (14.0 in) | 36.3 cm (14.3 in) | 2.6 kg (5.8 lb) |

- **Antenna Including the Selected Mounting (Specify when Ordering):**
 - **MG - Magnetic Mount**
 - **SQ - Mounts to 50.8 mm (2 in x 2 in) Square Tube**
 - **RD - Mounts to 50 mm (1.96 in) Round Pipe**
- **Individually Calibrated at 1 m per the SAE ARP 958**

Product Charts

**3165-01 Absorber
Nested Dual-Polarized
Dual-Vivaldi
Array Antenna
VSWR
Typical Performance**

