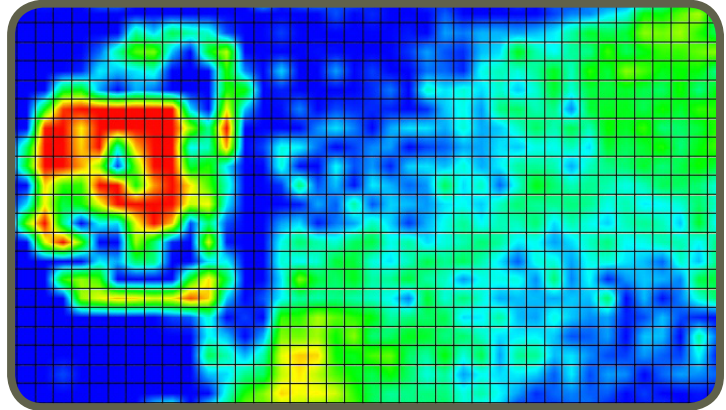


Real-time EMC and EMI diagnostic tool: Test ultra-high speed (>2GHz) PCBs in real-time on your lab-bench

EMC and signal integrity are major concerns in the design of ultra-high speed (>2GHz) PCBs. EHX enables the design engineers to diagnose EMC/EMI problems between 150kHz and 8GHz.

The EHX provides unique pre- and post-EMC compliance testing that images **real-time emissions**. EHX allows engineers to visualize the root causes of potential EMC and EMI problems.



During any new PCB development process, design engineers must find, characterize, and address unintended radiators or RF leakage to pass compliance testing. EHX allows board designers to pre-test and resolve EMC and EMI problems early on, thus avoiding unexpected EMC compliance test results.

EHX delivers **repeatable** and **reliable** results that pinpoint in less than a second the cause of a design failure. As a result, the user can personally test the design without having to rely on another department, test engineer, or time-consuming off-site testing. After diagnosing even an intermittent problem, the engineer can implement a design change and retest. The results provide concrete verification of the effectiveness (or not) of the design change.



EHX consists of a patented scanner and compact adaptor, and of a customer-supplied spectrum analyzer and PC running EHX software. EHX diagnostic capabilities allow design teams to **reduce testing time** by more than two orders of magnitude. Users have also documented fifty percent reductions in design cycle times. This allows the design team to immediately analyze and compare design iterations.

Ideal PCB projects for EHX are boards designed for high speed, high power, and/or high density/complexity. Any PCB that places a premium on board real-estate also qualifies as an excellent candidate.

The compact, flat scanner provides PCB design teams with an **easy-to-use, cost-effective, and proven tabletop solution**. Emission, immunity, filtering, EMI shielding, broadband noise and Common Mode testing are some of the applications that the EHX system addresses in mere seconds.

EHX Features

Capability	Spectral scan, spatial scan, peak-hold, continuous scanning, spectral and spatial comparison, scripting, limit lines, report generation, notes
Spatial scan time	Continuous real-time or sub-second single scan for entire scan area Dependent on spectrum analyzer performance
Spectral scan time	45 seconds for L 10cm x W 10cm (L 4" x W 4") PCB with a 100 MHz span and 100KHz RBW. Scanning area, span and RBW are user selectable within spectrum analyzer specifications
Supported spectrum analyzers	List at www.emscan.com/emxpert/EMx_supportedSA.cfm If your analyzer is not listed, please contact EMSCAN for custom driver PC can connect to the spectrum analyzer via USB or Ethernet (cross-over cable and static IP addresses for PC and spectrum analyzer)
Supported operating systems	Windows 8®, Windows 7®, Windows Vista® and Windows XP®
Supported CAD overlays	Standard Gerber® RS274x format and HPGL format

EHX Scanner Specifications

Broadband frequency coverage	150 kHz to 8 GHz enabled with software keys Base configuration 150 kHz to 4 GHz (3-year warranty Part #: 3000-1805, 5-year warranty Part #: 3000-1807) Upgrade 4 GHz to 8 GHz (Part #: 3000-1801; 3000-1805 pre-requisite) Alternate configuration 150 kHz to 8 GHz (3-year warranty Part #: 3000-1806, 5-year warranty Part #: 3000-1808)																																																															
Antenna array	1,218 (42 x 29) H-field probes																																																															
Measurement sensitivity	-130 dBm to 35 dBm (Dependent on spectrum analyzer performance) <table border="1"> <thead> <tr> <th>Frequency</th> <th>0.15</th> <th>0.5</th> <th>1</th> <th>300</th> <th>696</th> <th>1500</th> <th>2000</th> <th>2600</th> <th>3000</th> <th>3500</th> </tr> </thead> <tbody> <tr> <td>Sensitivity</td> <td>0</td> <td>-15</td> <td>-25</td> <td>-68</td> <td>-75</td> <td>-79</td> <td>-83</td> <td>-85</td> <td>-85</td> <td>-86</td> </tr> <tr> <td>Sensitivity with LNA*</td> <td>-10</td> <td>-25</td> <td>-45</td> <td>-90</td> <td>-95</td> <td>-100</td> <td>-100</td> <td>-130</td> <td>-95</td> <td>-100</td> </tr> </tbody> </table> <table border="1"> <thead> <tr> <th>Frequency</th> <th>4000</th> <th>4500</th> <th>5000</th> <th>5500</th> <th>6000</th> <th>6500</th> <th>7000</th> <th>7500</th> <th>8000</th> </tr> </thead> <tbody> <tr> <td>Sensitivity</td> <td>-78</td> <td>-68</td> <td>-70</td> <td>-75</td> <td>-70</td> <td>-65</td> <td>-70</td> <td>-60</td> <td>-60</td> </tr> <tr> <td>Sensitivity with Power Amp.**</td> <td>-91</td> <td>-85</td> <td>-90</td> <td>-88</td> <td>-85</td> <td>-90</td> <td>-85</td> <td>-70</td> <td>-63</td> </tr> </tbody> </table> <p>* 40 dB LNA; ** 38 dB Power amplifier (Please refer to Technical Bulletin #15 for the test setup)</p>	Frequency	0.15	0.5	1	300	696	1500	2000	2600	3000	3500	Sensitivity	0	-15	-25	-68	-75	-79	-83	-85	-85	-86	Sensitivity with LNA*	-10	-25	-45	-90	-95	-100	-100	-130	-95	-100	Frequency	4000	4500	5000	5500	6000	6500	7000	7500	8000	Sensitivity	-78	-68	-70	-75	-70	-65	-70	-60	-60	Sensitivity with Power Amp.**	-91	-85	-90	-88	-85	-90	-85	-70	-63
Frequency	0.15	0.5	1	300	696	1500	2000	2600	3000	3500																																																						
Sensitivity	0	-15	-25	-68	-75	-79	-83	-85	-85	-86																																																						
Sensitivity with LNA*	-10	-25	-45	-90	-95	-100	-100	-130	-95	-100																																																						
Frequency	4000	4500	5000	5500	6000	6500	7000	7500	8000																																																							
Sensitivity	-78	-68	-70	-75	-70	-65	-70	-60	-60																																																							
Sensitivity with Power Amp.**	-91	-85	-90	-88	-85	-90	-85	-70	-63																																																							
Spatial resolution	Probe spacing of 7.5 mm with an 'effective' resolution of 3.75 mm																																																															
Scan area	L 31.6 cm x W 21.8 cm (L 12.44" x W 8.58")																																																															
Frequency accuracy of peaks	Peak marking accuracy of spectrum analyzer																																																															
Probe to probe uniformity	Calibrated before shipment. Firmware correction factors adjust for frequency dependant probe responses with +/- 3dB accuracy																																																															
Measurement plane isolation	> 20 dB																																																															
Maximum radiated power load	10 W / 40 dBm																																																															
Operating temperature	From -20 °C to +45 °C (continuous spectral and spatial scans at 50 MHz)																																																															
In situ scanning	6U Size C scanner fits into VXI and VME chassis																																																															
Scanner connections	Spectrum analyzer: RF SMA to type N coaxial cable Adaptor: Proprietary DB25																																																															
Dimensions of the scanner	L 39.2 cm x W 24.4 cm x H 1.7 cm (L 15.43" x W 9.61" x H 0.67")																																																															
Weight	2.80 Kg / 6.17 lb (incl. cables and the adaptor)																																																															

EHX Adaptor Specifications

Adaptor connections	Spectrum analyzer: SMB PC: USB B Scanner: Proprietary DB25
Power requirements	Powered over USB link
Dimensions	L 8.5cm x W 7.00cm x H 2.00cm (L 3.35" x W 2.76" x H 0.78")



#1, 1715-27 Avenue NE
Calgary, AB T2E 7E1
Canada

Tel: +1-403-291 0313
Fax: +1-403-250 8786

www.emscan.com